

Laguna Rancho

Patented Feb 23, 1877.

Surveyed Public Land.

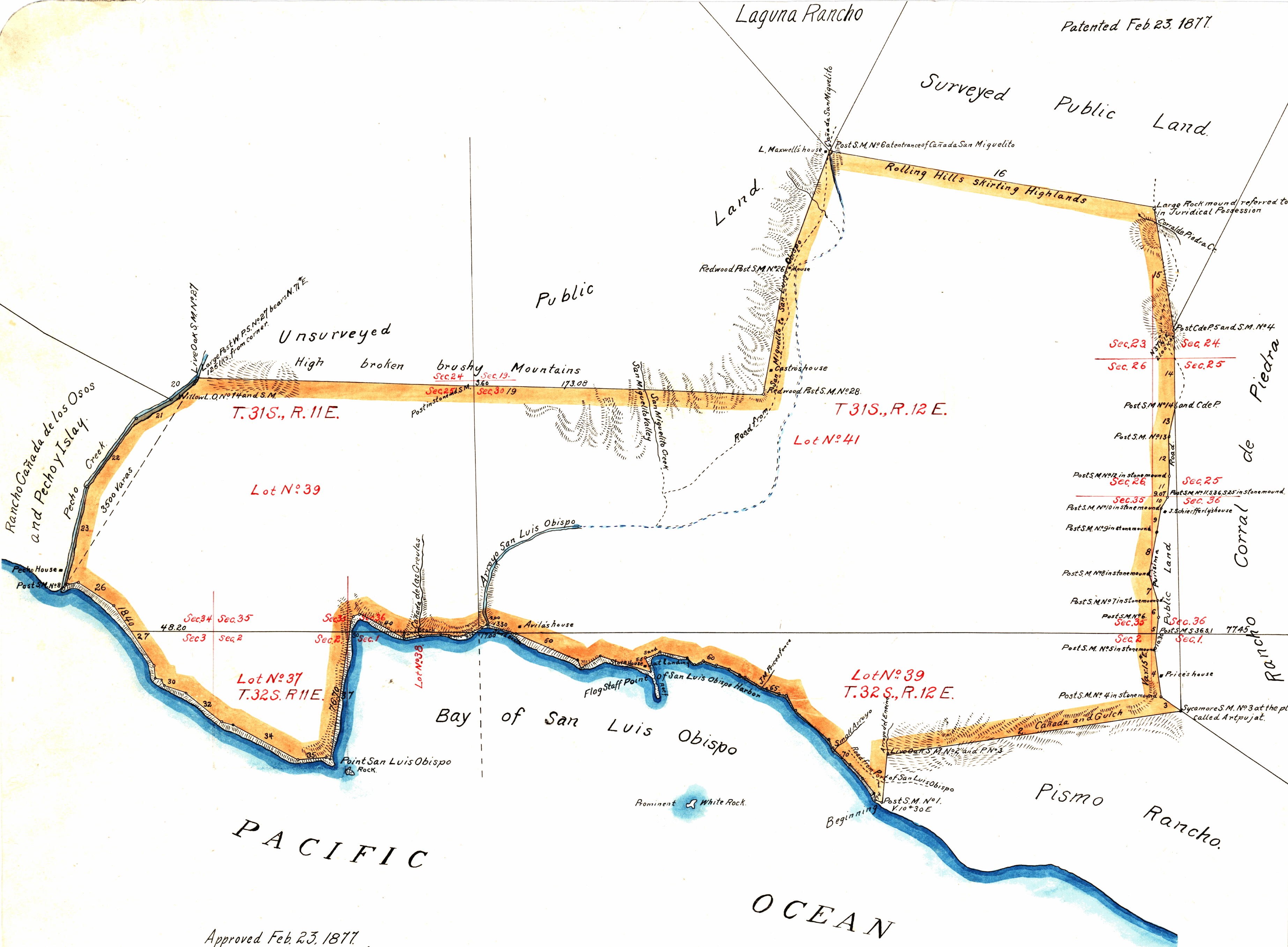
PLAT

of the
RANCHO SAN MIGUELITO
finally confirmed to
Miguel Avila
Surveyed under instructions from the
U.S. SURVEYOR GENERAL

by
Wm C. Parker ----- June 1865
C. T. Healy ----- dep. Surv. May 1870
and Robt. R. Harris ----- January 1875.

Containing 14,983.30 Acres
Scale 40chs. to 1inch.
Variation 14°30' to 15° East.

Boundaries					
No	Course	Dist.	No	Course	Dist.
1	N. 8° E.	30.50	38	N. 22 1/4 E.	28.4
2	N. 8 1/2 E.	176.11	39	N. 52 3/4 E.	4.00
3	N. 59 1/2 W.	14.47	40	S. 59 1/2 E.	31.64
4	N. 6 W.	28.77	41	N. 78 E.	11.25
5	N. 6 1/2 E.	19.00	42	N. 82 1/2 E.	12.60
6	N. 3 1/2 W.	10.00	43	S. 66 E.	4.26
7	N. 15 1/2 W.	16.00	44	N. 80 E.	3.00
8	N. 8 E.	26.97	45	S. 76 E.	2.47
9	N. 12 1/2 E.	12.81	46	N. 79 E.	4.00
10	N. 30 1/4 E.	7.80	47	N. 71 1/2 E.	11.65
11	N. 59 1/4 E.	11.37	48	N. 41 1/2 E.	2.00
12	N. 1 1/2 W.	23.40	49	S. 75 E.	20.10
13	N. 13 1/4 W.	18.00	50	S. 67 1/4 E.	39.66
14	N. 11 1/4 W.	45.62	51	S. 26 E.	5.21
15	N. 9 3/4 W.	72.21	52	N. 62 E.	12.71
16	N. 79 1/4 W.	196.56	53	S. 73 1/2 E.	31.13
17	S. 9 1/2 W.	78.00	54	North.	2.70
18	S. 9 1/2 W.	71.50	55	N. 40 W.	5.84
19	N. 88 5 W.	338.28	56	N. 69 E.	10.00
20	S. 52 W.	2.00	57	S. 78 1/2 E.	15.00
21	S. 63 W.	24.00	58	S. 47 1/2 E.	5.37
22	S. 36 W.	48.00	59	N. 75 1/4 E.	6.00
23	S. 13 W.	63.00	60	S. 67 1/2 E.	8.00
24	N. 44 3/4 E.	3.00	61	S. 79 1/2 E.	7.00
25	N. 71 E.	6.00	62	S. 68 1/2 E.	8.00
26	S. 56 1/4 E.	26.43	63	S. 49 1/4 E.	4.00
27	S. 34 3/4 E.	42.17	64	S. 61 1/2 E.	12.00
28	S. 3 E.	8.00	65	S. 74 E.	11.00
29	S. 88 E.	5.00	66	S. 56 3/4 E.	5.00
30	S. 3 E.	3.60	67	S. 35 3/4 E.	9.00
31	S. 73 1/2 E.	13.91	68	S. 49 1/2 E.	27.00
32	S. 50 1/2 E.	27.41	69	S. 26 3/4 E.	6.00
33	S. 80 1/4 E.	7.60	70	S. 50 E.	14.12
34	S. 61 1/4 E.	43.76	71	S. 35 1/2 E.	11.00
35	N. 86 3/4 E.	17.82	72	S. 39 1/2 E.	10.00
36	S. 30 3/4 E.	2.00	73	S. 17 1/2 E.	5.00
37	N. 9 1/2 E.	82.88	74	S. 58 1/2 E.	4.00



Approved Feb. 23, 1877.

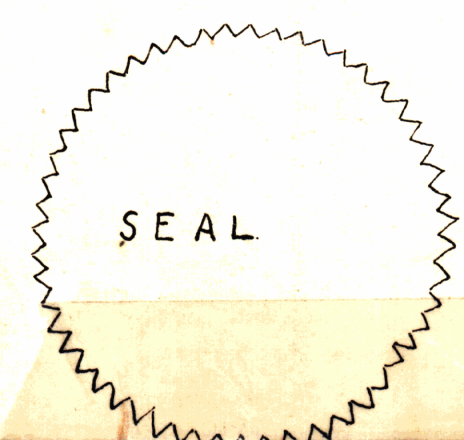
J. A. Williamson.
Commissioner of the General
Land Office.

The field notes of the Rancho San Miguelito finally confirmed to Miguel Avila, from which this plat has been made have been examined and approved and are on file in this Office; the survey thereof being in conformity with the decision of the Hon. Comm^r Genl. Land Office dated July 9th 1873.
U.S. Surveyor General's Office
San Francisco California. May 25th 1875.

Just. Stratton
U.S. Surv. Gen. Cal.

Patented Feb. 23, 1877.

DEPARTMENT OF THE INTERIOR,
GENERAL LAND OFFICE,
Washington, D. C. *June 9th 1910.*
I hereby certify that this is a true copy
of the plat of official survey of the lands
to which it relates, on file in this office.



10 409

Notes G-47

335

Wm. C. Parker
Recorder, General Land Office.