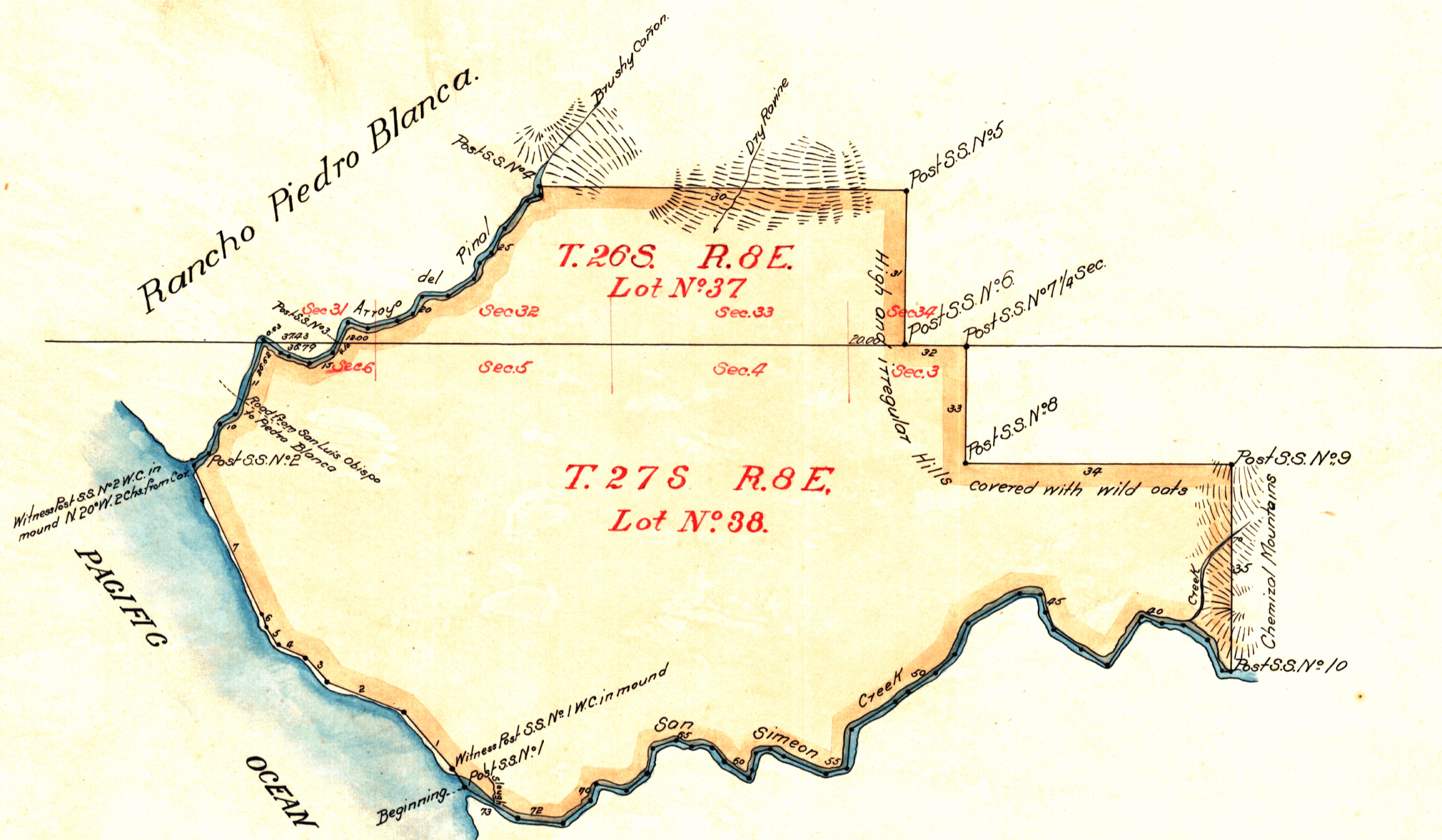


Boundaries

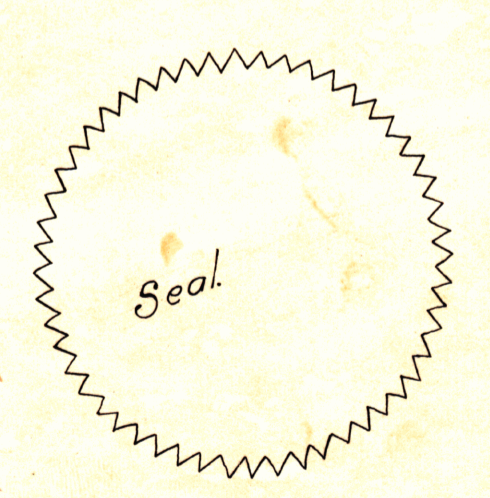
No	Course	Dist	No	Course	Dist	No	Course	Dist
1	N41/4W	33.00	20	N50° E.	2.00	51	S. 40° W	5.00
2	N09° W	27.00	27	N39° E.	12.00	52	S. 55 1/2° W	4.00
3	N41/4W	11.00	28	N72° E.	4.00	53	S. 61° W	14.00
4	N07° W	10.00	29	N18° W	3.00	54	S. 8 1/4° W	14.00
5	N35° W	7.00	30	East	124.91	55	S. 70° W	7.00
6	N15° W	5.00	31	South	51.33	56	N09 1/4° W	18.00
7	N25 1/4° W	54.00	32	East	2.00	57	N59 1/4° W	4.00
8	N55° E.	7.00	33	South	4.00	58	S. 79 1/4° W	5.00
9	N19 1/4° E.	10.00	34	East	9.00	59	S. 15 1/4° W	9.00
10	N00° E.	8.00	35	South	58.57	60	N00° W	10.00
11	N19 1/2° E.	27.00	36	N08° W	2.50	61	N40° W	8.00
12	S. 55° E.	8.00	37	N23 1/2° W	11.30	62	N50° W	4.00
13	S. 77° E.	4.00	38	N00° W	10.00	63	S. 05° W	4.00
14	S. 08 1/2° E.	8.75	39	West	7.00	64	N02° W	2.00
15	N58 1/4° E.	8.00	40	N07 1/4° W	7.00	65	N00° W	4.00
16	N20 1/2° E.	11.00	41	S. 33 1/4° W	20.00	66	S. 70° W	9.00
17	S. 74 1/2° E.	8.00	42	N02 1/4° W	11.00	67	S. 5° W	9.00
18	N70 1/2° E.	10.00	43	N56 1/4° W	11.00	68	S. 54° W	9.00
19	N03 1/2° E.	5.00	44	N27° W	8.00	69	N00° W	10.00
20	N25° E.	7.00	45	N10 1/2° W	7.00	70	S. 20° W	8.00
21	S. 88 1/4° E.	9.00	46	N08 1/4° W	7.00	71	S. 52 1/4° W	12.00
22	N57° E.	12.00	47	S. 59 1/4° W	2.00	72	N. 84° W.	15.00
23	N8 1/2° E.	5.00	48	S. 22° W	12.00	73	N00° W	20.00
24	N54° E.	5.00	49	S. 45 1/4° W	9.00			
25	N25° E.	8.00	50	S. 60 1/4° W	11.00			



PLAT
of the
RANCHO SAN SIMEON
finally confirmed to
J.M. Gomez.
Surveyed under instructions from the
U.S. SURVEYOR GENERAL
by
Brice M. Henry, Dep. Sur.
September, 1858.
Containing 4,468 81/100 Acres.
Scale 40 Chs to 1 inch
Variation 14' 15" East

Note: A notice of the approval of this Plat of Survey has been published in accordance with the Act of Congress of June 14th 1860 in the "Los Angeles Star," the first publication thereof being on the 2nd of March, and the last on the 23rd of March 1861, also in the newspaper nearest the land being the "Santa Barbara Gazette," the first publication thereof being on the 17th of January, and the last on the 7th of February 1861.
This Plat has remained in this Office subject to inspection from the date of the approval thereof.
J. W. Mandeville
U.S. Survey Genl. Cal.

The field notes of the Rancho San Simeon from which this Plat has been made, have been examined and approved and are on file in this Office.
U.S. Surveyor General's Office,
San Francisco, California,
September 15th. 1860
J. W. Mandeville
U.S. Survey Genl. Cal.



A full true and correct Copy of the original Plat on file in this Office,
U.S. Surveyor General's Office
San Francisco California,
March 24th 1862.

C. F. Peale
U.S. Surveyor Genl. Cal.

DEPARTMENT OF THE INTERIOR,
GENERAL LAND OFFICE,
Washington, D. C. Oct. 14th 1868.
I hereby certify that this is a true copy of the plat of official survey of the lands to which it relates, on file in this office.

H. A. Jones
Recorder, General Land Office.