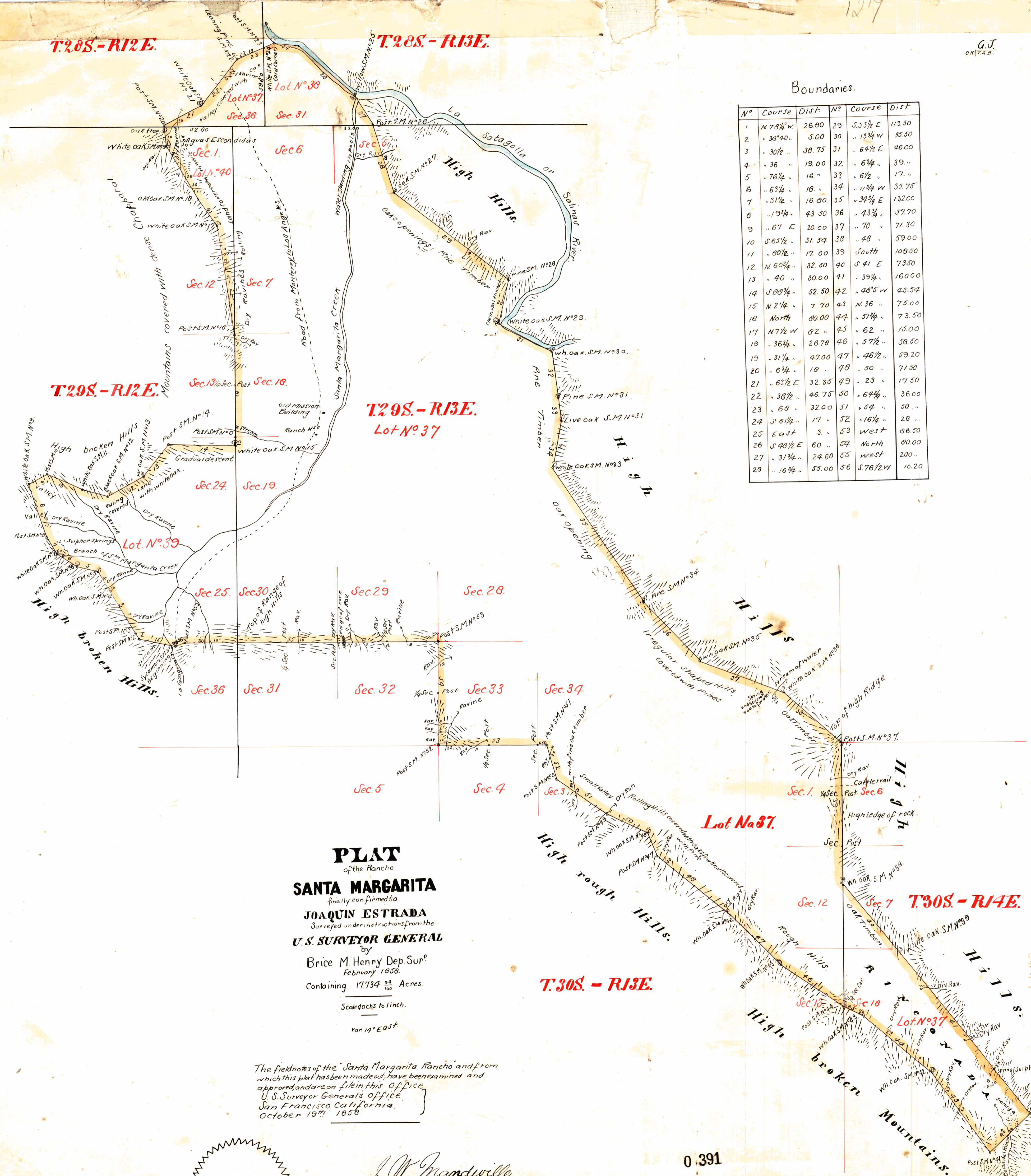


G.J.
Oct 17 1858

Boundaries.

N ^o	Course	Dist	N ^o	Course	Dist
1	N 78 1/4 W	26.80	29	S 33 1/2 E	113.50
2	" 38 40 "	5.00	30	" 13 3/4 W	35.50
3	" 30 1/2 "	38.75	31	" 64 1/2 E	46.00
4	" 36 "	19.00	32	" 6 3/4 "	39. "
5	" 76 1/2 "	16. "	33	" 6 1/2 "	17. "
6	" 63 1/4 "	18. "	34	" 11 3/4 W	55.75
7	" 31 1/2 "	16.00	35	" 34 3/4 E	132.00
8	" 19 1/4 "	43.50	36	" 43 1/4 "	57.70
9	" 67 E	20.00	37	" 70 "	71.30
10	S 65 1/2 "	31.54	38	" 48 "	59.00
11	" 80 1/2 "	17.00	39	South	108.50
12	N 60 1/4 "	32.50	40	S 41 E	73.50
13	" 40 "	30.00	41	" 39 1/4 "	160.00
14	S 88 3/4 "	52.50	42	" 48 5 W	45.54
15	N 2 1/4 "	7.70	43	N 36 "	75.00
16	North	80.00	44	" 51 1/4 "	73.50
17	N 7 1/2 W	82. "	45	" 62 "	15.00
18	" 36 3/4 "	26.78	46	" 57 1/2 "	58.50
19	" 31 1/4 "	47.00	47	" 46 1/2 "	59.20
20	" 6 3/4 "	19. "	48	" 50 "	71.50
21	" 63 1/2 E	32.35	49	" 23 "	17.50
22	" 38 1/2 "	46.75	50	" 64 1/4 "	36.00
23	" 68 "	32.00	51	" 54 "	50. "
24	S 81 1/4 "	17. "	52	" 16 1/4 "	28. "
25	East	3. "	53	West	86.50
26	S 48 1/2 E	60. "	54	North	80.00
27	" 31 1/4 "	29.80	55	West	200. "
28	" 16 3/4 "	55.00	56	S 76 1/2 W	10.20



PLAT
of the Rancho
SANTA MARGARITA
finally confirmed to
JOAQUIN ESTRADA
Surveyed under instructions from the
U.S. SURVEYOR GENERAL
by
Brice M. Henry Dep. Sur.
February 1858.
Containing 17734 ³⁹/₁₀₀ Acres.
Scale 60chs to 1 inch.
Var 14° East

The field notes of the Santa Margarita Rancho and from which this plat has been made out, have been examined and approved and are on file in this office.
U.S. Surveyor General's Office,
San Francisco California,
October 19th 1858.



J. W. Mandeville.
U.S. Surv. Genl. Cal.

DEPARTMENT OF THE INTERIOR,
GENERAL LAND OFFICE,
Washington, D. C., Dec. 21, 1910.
I hereby certify that this is a true copy of the plat of official survey of the lands to which it relates, on file in this office.

H. W. [Signature]
Recorder, General Land Office.

0 391