

G. J.  
O.K. T.A.B.

**PLAT**  
of the  
**RANCHO SANTA ROSA**

Finally confirmed to  
**JULIAN ESTRADA**

Surveyed under Instructions from the

**U.S. SURVEYOR GENERAL**

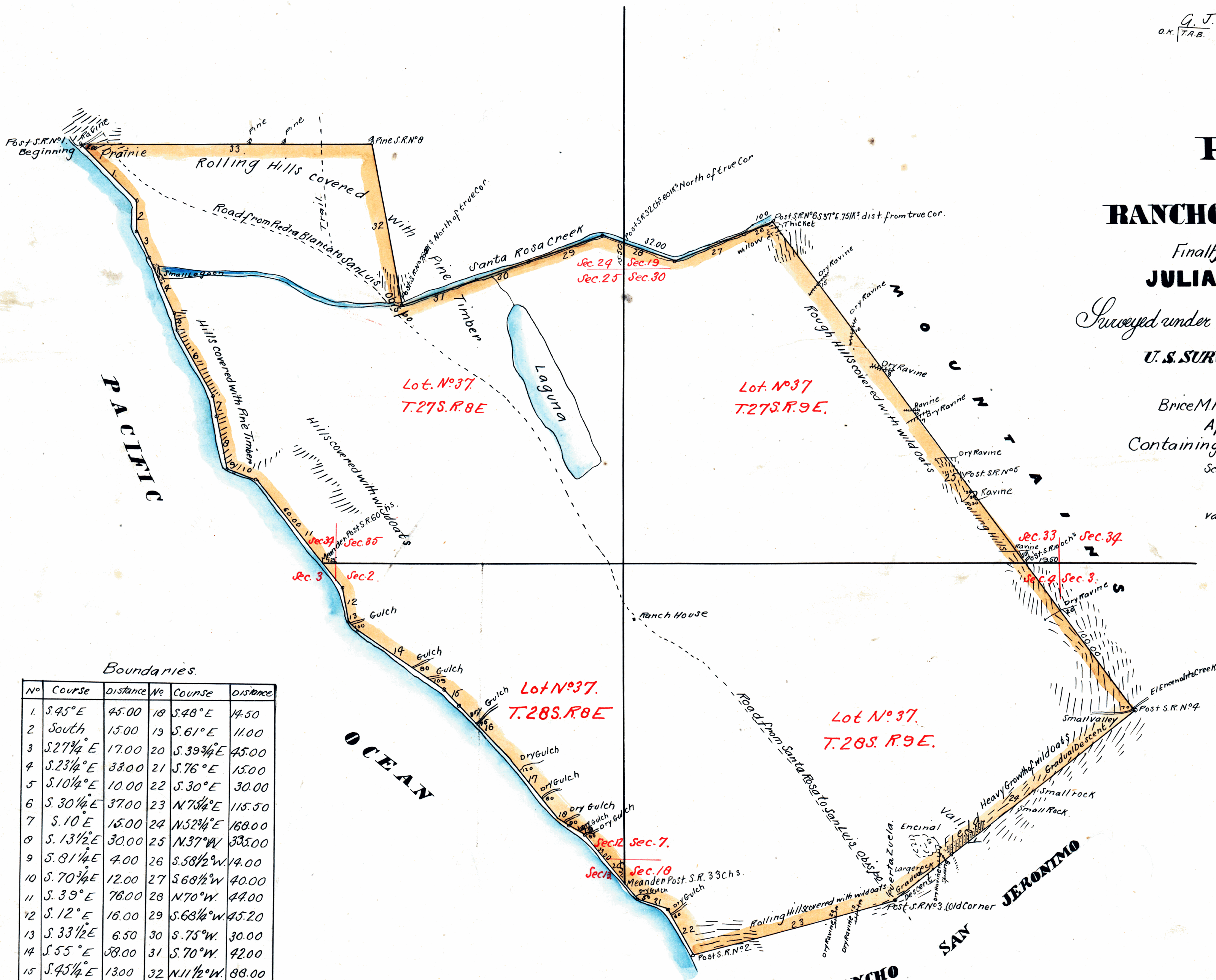
by  
Brice M. HENRY, Dep't. Survr.

April 1858

Containing 13,183  $\frac{62}{100}$  Acres

Scale 40 Chains to 1 inch

Variation 14°30' East



Boundaries.

No	Course	Distance	No	Course	Distance
1	S. 45° E	45.00	18	S. 48° E	14.50
2	South	15.00	19	S. 61° E	11.00
3	S. 27 1/4° E	17.00	20	S. 39 3/4° E	45.00
4	S. 23 1/4° E	33.00	21	S. 76° E	15.00
5	S. 10 1/2° E	10.00	22	S. 30° E	30.00
6	S. 30 1/4° E	37.00	23	N. 73 1/4° E	115.50
7	S. 10° E	15.00	24	N. 52 3/4° E	168.00
8	S. 13 1/2° E	30.00	25	N. 37° W	335.00
9	S. 81 1/4° E	4.00	26	S. 58 1/2° W	14.00
10	S. 70 3/4° E	12.00	27	S. 68 1/2° W	40.00
11	S. 39° E	78.00	28	N. 70° W	44.00
12	S. 12° E	16.00	29	S. 68 1/2° W	45.20
13	S. 33 1/2° E	6.50	30	S. 75° W	30.00
14	S. 55° E	38.00	31	S. 70° W	42.00
15	S. 45 1/4° E	13.00	32	N. 11 1/2° W	88.00
16	S. 44° E	38.00	33	West	163.00
17	S. 70 1/4° E	4.00			

DEPARTMENT OF THE INTERIOR,  
GENERAL LAND OFFICE,  
Washington, D. C., Dec. 21, 1910.  
I hereby certify that this is a true copy  
of the plat of official survey of the lands  
to which it relates, on file in this office.

*R. S. Land*  
Register General Land Office

The Field notes of the Rancho Santa Rosa and from which the Plat has been  
made out, have been examined and approved and are on file in this Office.  
U.S. Surveyor General's Office,  
San Francisco, California  
May 3<sup>rd</sup> 1858

*J. W. Mandeville*  
U.S. Surveyor General California



0 397