

O-K
TAB.

K.J.F.

T. 10 N. R. 32 W.

T. 10 N. R. 31 W.

T. 9 N. R. 32 W.

T. 9 N. R. 31 W.
Lot N° 38

T. 9 N. R. 30 W.

T. 8 N. R. 31 W.

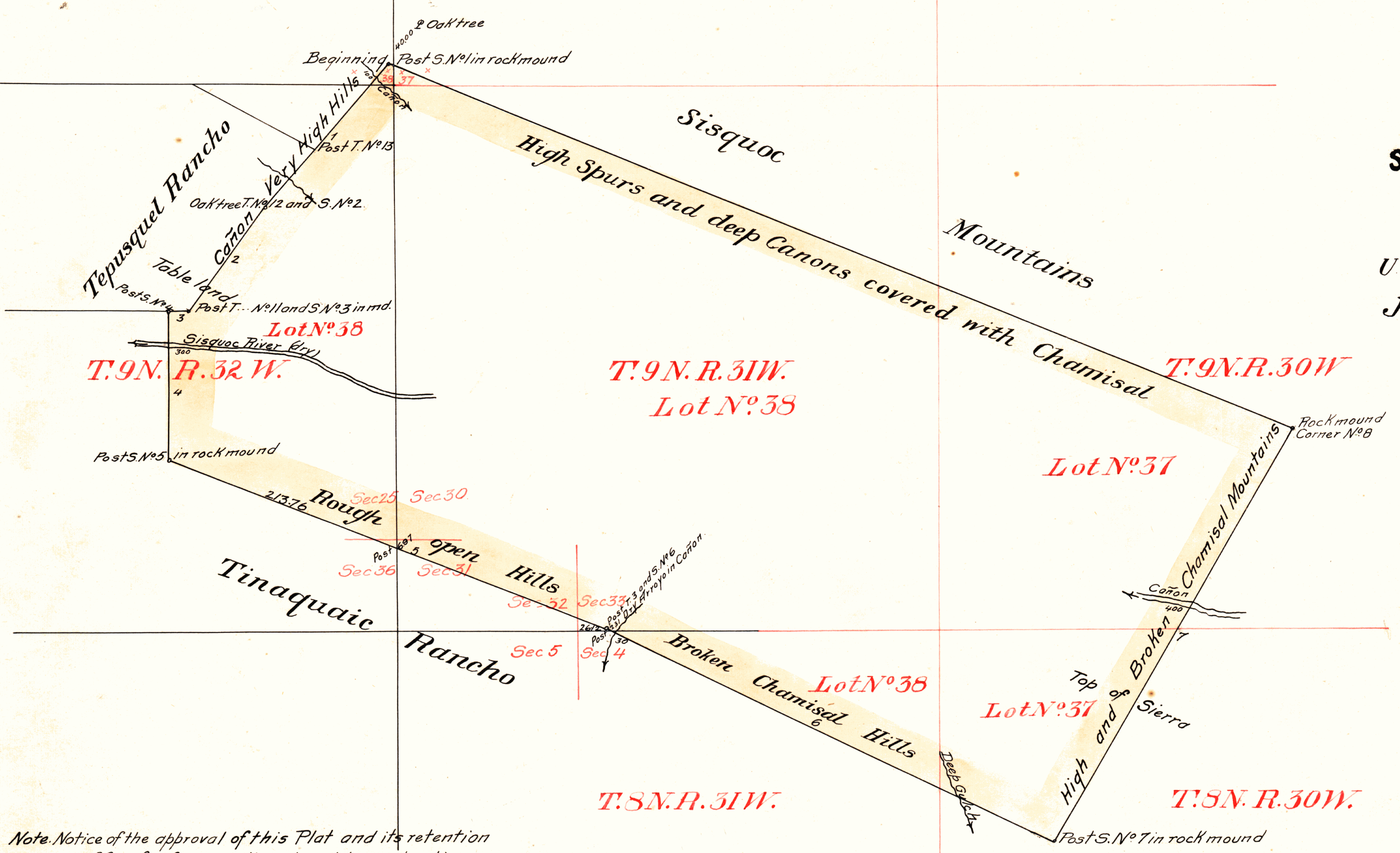
T. 8 N. R. 30 W.

PLAT
of the
SISQUOC RANCHO
finally confirmed to
James B. Huie et al.
Surveyed under instructions from the
U.S. SURVEYOR GENERAL
by
J.E. Terrell, Dep. Sur.
October 1860
Containing 354.85^{7/100} Acres.
Scale 80 Chs to 1 inch.
Variation 14° 5' East.

Boundaries

N°	Course	Dist.
1	S 41 1/2° W	169.00
2	" 36 "	114.10
3	West	18.00
4	South	131.63
5	S 69° E	414.50
6	" 64 1/2 "	440.00
7	N. 30 "	421.16
8	" 68 1/4 W	860.85

Aggregate 2569.24 - 32 M^s 9 Chs. 241 Ks.



Note. Notice of the approval of this Plat and its retention in Office for four weeks subject to inspection, was published from 2nd March to 23^d March 1861, in pursuance of the Act of Congress of June 14th 1860

J.W. Mandeville
U.S. Surr. Gen^l. Cal.

The field notes of the Sisquoc Rancho and from which this Plat has been made out, have been examined and approved and are on file in this Office.

U.S. Surveyor General's Office.
San Francisco, California
December 5th 1860.

J.W. Mandeville.
U.S. Surr. Gen^l. Cal.



A full true and correct Copy of the Original Plat on file in this Office.
U.S. Surveyor General's Office.
San Francisco, California.
February 5th 1866

L. Dupson
U.S. Surr. Gen^l. Cal.

DEPARTMENT OF THE INTERIOR,
GENERAL LAND OFFICE,
Washington, D. C., Dec. 27, 1860.
I hereby certify that this is a true copy of the plat of official survey of the lands to which it relates, on file in this office.

W. Conrad
Recorder, General Land Office