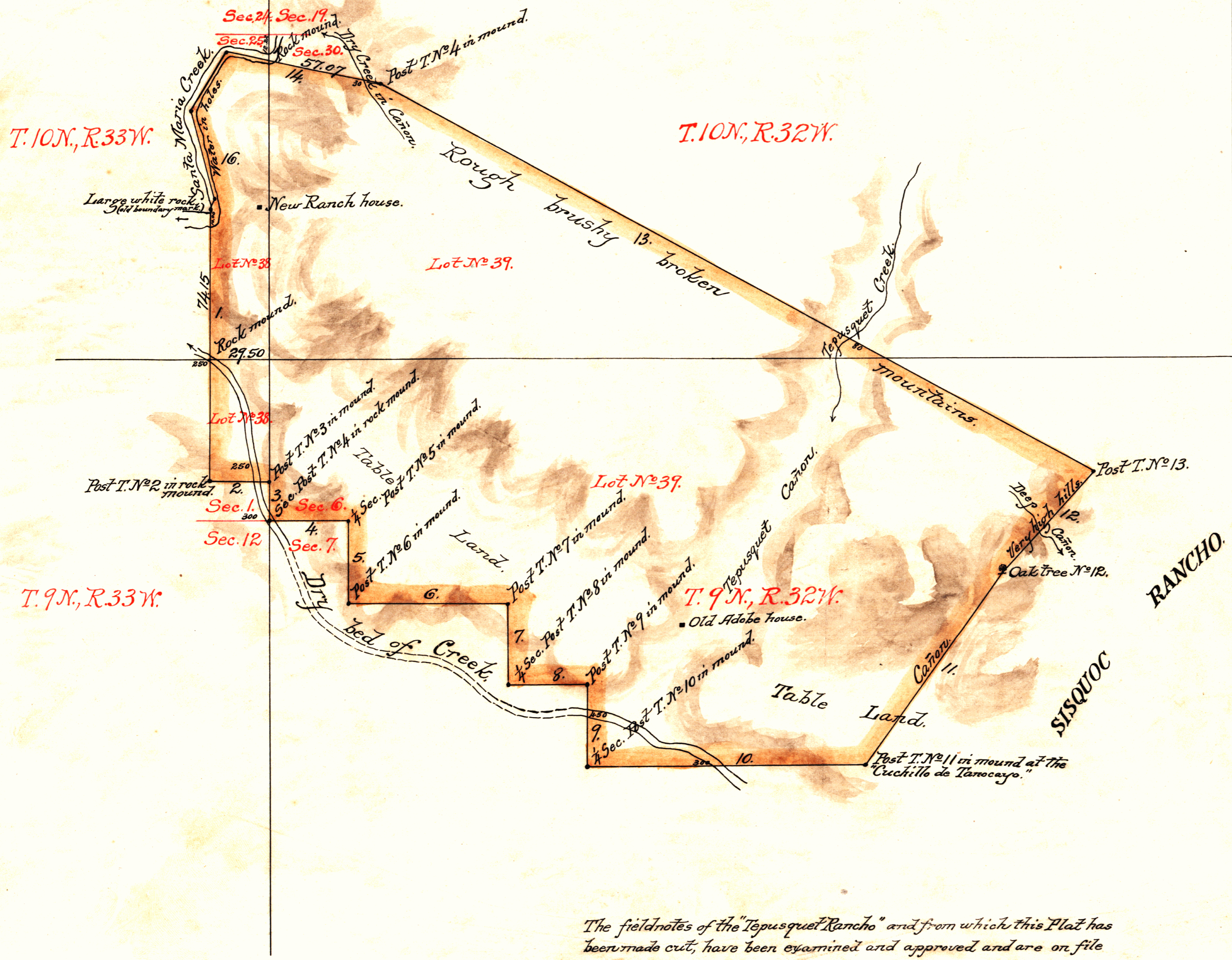


A. EMP.



PLAT
of the
TEPUSQUET RANCHO
finally confirmed to
ANTONIO MARIA COTA et al,
Surveyed under instructions from the
U.S. SURVEYOR GENERAL,
by
J. E. Terrel, Dep. Sur.
September 1860.
Containing 8,900 ¹⁰⁰/₁₀₀ Acres.
Scale 40 Chs to 1 in.
Variation 14° 10' East.

Field notes.

No	Course.	Dist.
1.	South.	134.00
2.	East.	29.50
3.	South.	20.00
4.	East.	40.00
5.	South.	40.00
6.	East.	80.00
7.	South.	40.00
8.	East.	40.00
9.	South.	40.00
10.	East.	138.00
11.	N. 36° E.	114.10
12.	N. 4 1/2° E.	69.00
13.	N. 61 1/2° W.	402.40
14.	N. 78° W.	78.00
15.	S. 31 1/2° W.	35.00
16.	S. 14 1/2° E.	45.00
17.	S. 24 1/2° W.	4.30

Aggregate 1367.30 = 16 mls. 67 chs. 30 lks.

Note. Notice of the approval of this Plat and its retention in Office for four weeks subject to inspection was published from January 17th 1861 to February 7th 1861, in pursuance of the Act of Congress of June 14th, 1860.

J. W. Mandeville,
U.S. Surv^r Gen'l. Cal.

The field notes of the "Tepusquet Rancho" and from which this Plat has been made cut, have been examined and approved and are on file in this Office.
U.S. Surveyor General's Office,
San Francisco, California,
December 5th, 1860.

J. W. Mandeville,
U.S. Surv^r Gen'l. Cal.



0 422

I hereby certify this to be a full, true and correct copy of the original Plat on file in this Office.
U.S. Surveyor General's Office,
San Francisco, California,
June 23rd 1870.
DEPARTMENT OF THE INTERIOR,
GENERAL LAND OFFICE,
Washington, D. C., May 26, 1870.
I hereby certify that this is a true copy of the plat of official survey of the lands to which it relates, on file in this office.

Sherman Day
U.S. Surv^r Gen'l. Cal.

Notes in N-23
349

Wm. J. ...
Recorder, General Land Office.