



**SAN LUIS OBISPO COUNTY FLOOD CONTROL AND WATER
CONSERVATION DISTRICT
OPTIONAL Pre-Bid Conference: Arroyo Grande Creek Channel
Emergency Levee Rehabilitation Project Phase 2B
Tuesday, November 28, 2023 2:00PM**

www.slocounty.ca.gov



Arroyo Grande Creek Emergency Levee Rehabilitation Project Phase 2B Pre-Bid Meeting
Contract No. 300698
Non-MANDATORY PRE-BID MEETING
Tuesday, November 28, 2023 at 2:00 p.m.

NOTE: Pre-bid meeting is for informational purposes only. The contract documents present all requirements for project work and prevail over any information provided at this meeting. All bidder requests for information must be submitted no later than 5 days prior to the bid opening date. Requests submitted after said date may not be considered. Bidders should submit requests for information to the County during the bid period at the following website:

[http://www.slocounty.ca.gov/GS/Purchasing/Current Formal Bids and Proposals.htm](http://www.slocounty.ca.gov/GS/Purchasing/Current%20Formal%20Bids%20and%20Proposals.htm)

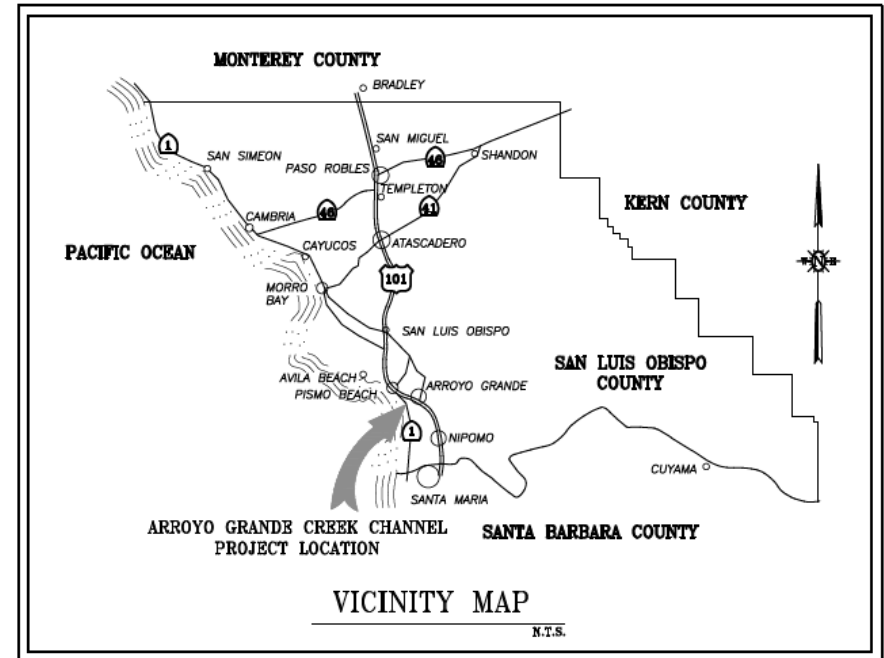
CONTRACTOR	CONTACT	PHONE	EMAIL

G:\WR\Flood Control Zones\Zone 1-1A\Phase 2 Arroyo Grande Creek Emergency Levee Rehabilitation\07 AD-15\Phase 2B\01 [Advertisement](#)



Pre-Bid Conference Agenda

- Levee Background
- Project Overview
- Tentative Timeline
- RFI's & Addenda



Levee Background

- The Arroyo Grande Creek Flood Control Channel was designed and constructed in 1961 by the former US Soil Conservation Service.
 - Project spans a 3.5 mile levee system with a trapezoidal channel that confines the Arroyo Grande Creek from the town of Arroyo Grande to the Pacific Ocean
- The levee system is currently maintained by the SLO County Flood Control and Water Conservation District in accordance with the Waterway Management Program to provide 10-year flood protection with 2 feet of freeboard
 - South Levee is designed to overtop first (1' lower than North Levee) to protect regional airport, wastewater treatment plant, and residential communities to the North.
 - Levees improved in 2019/2020 with installation of Turf Reinforcing Mat (TRM), establishment of secondary channels, levee road improvements.

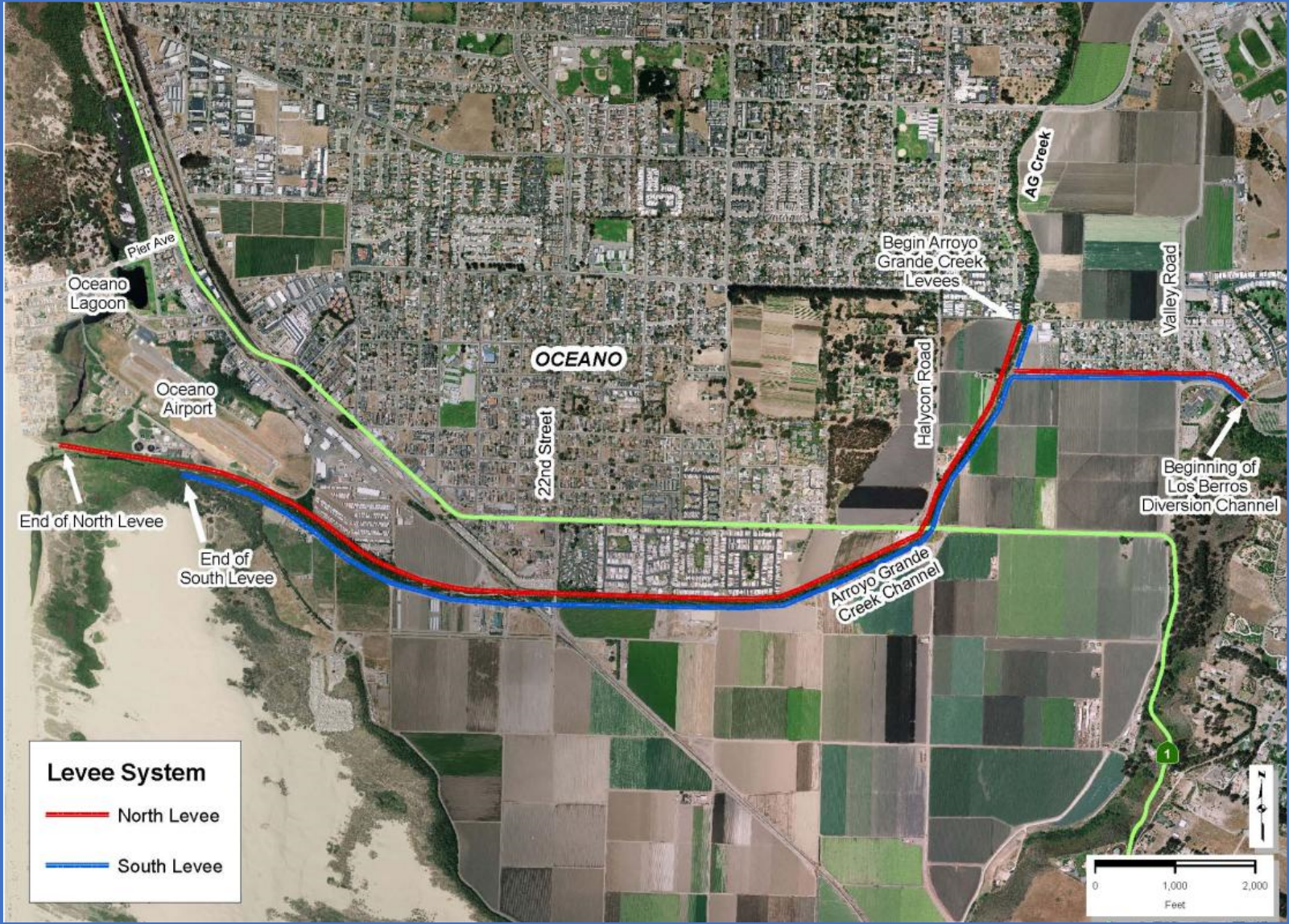


Levee Background

- Levees embankments were designed with 15' wide crests and elevations ranging approximately 9' on the exterior slopes to 11-18' on the interior.
- The site is generally flat with natural grades sloping from approximately 1-5% west, towards the Pacific Ocean.
- Details related to the subsurface exploration can be found in Appendix B – Yeh and Associates Final Geotechnical Report



Arroyo Grande Creek Levees





1961

2020

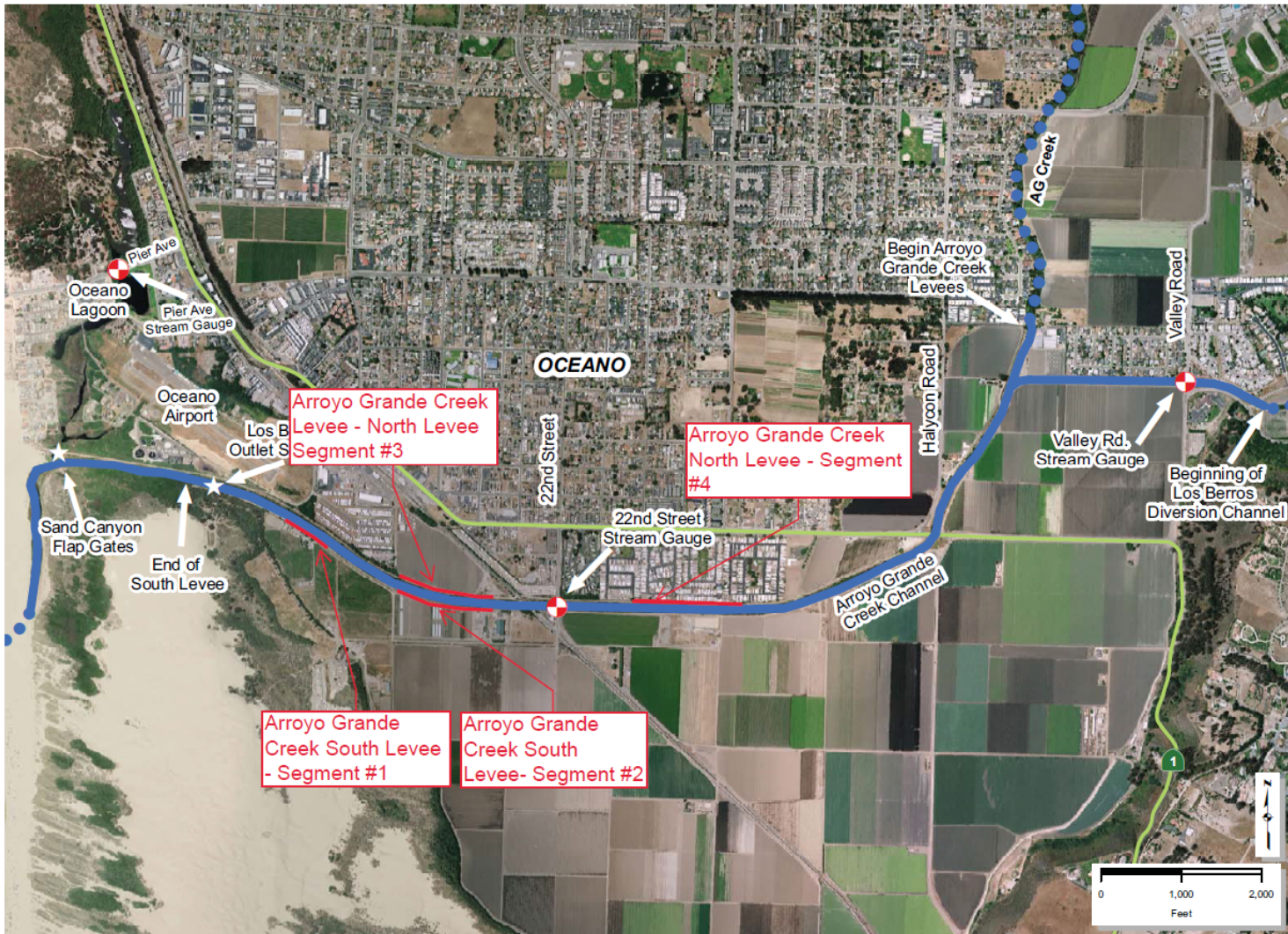


COUNTY OF SAN LUIS OBISPO

Project Overview

- Project was developed to repair damages sustained during the 2022-2023 winter storm season.
- January 9th, 2023 storm caused the largest amount of damage to the levee, with through-seepage and slope instability occurring in various sections of the levee.
- District and its consultants conducted geotechnical analysis to determine a preferred alternative to repair damages (Appendix B). Slag-cement-cement-bentonite (SCCB) cutoff walls were determined to best meet the District's goals.
- Project consists of 4 vertical cutoff wall segments with a minimum width of 30" extending to depths of 20-25'.





Arroyo Grande Creek Channel Emergency Levee Rehabilitation Project Phase 2B



Project Overview – North Levee Damages (Segment 3)



Total of 13 levee boils/blowouts along North Levee Segment 3



COUNTY OF SAN LUIS OBISPO

www.slocounty.ca.gov

Project Overview – North Levee Repairs (Segment 3)



Project Overview – North Levee (Segment 3)



Project Overview – North Levee Damages/Repairs (Segment 4)



Project Overview – North Levee (Segment 4)



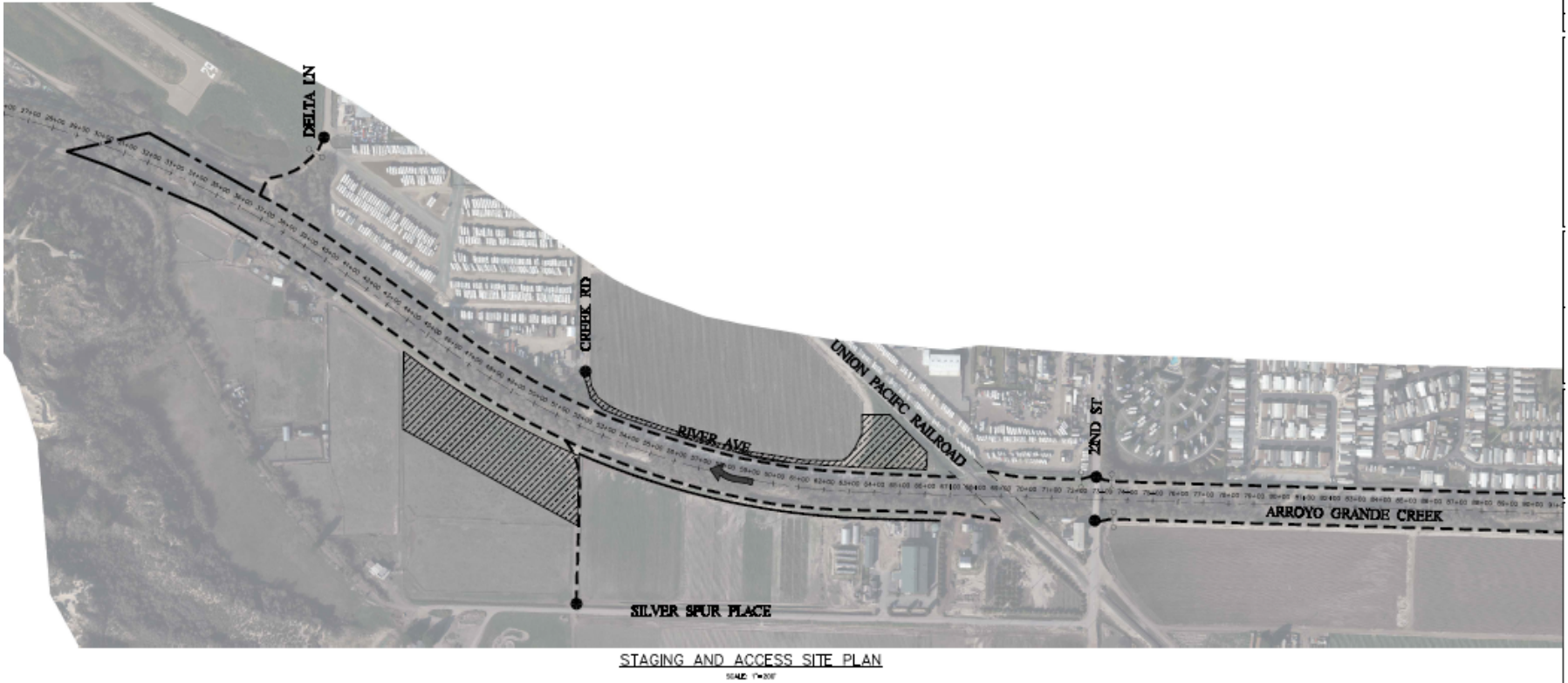
Project Overview – South Levee Damages/Repairs (Segments 1 and 2)



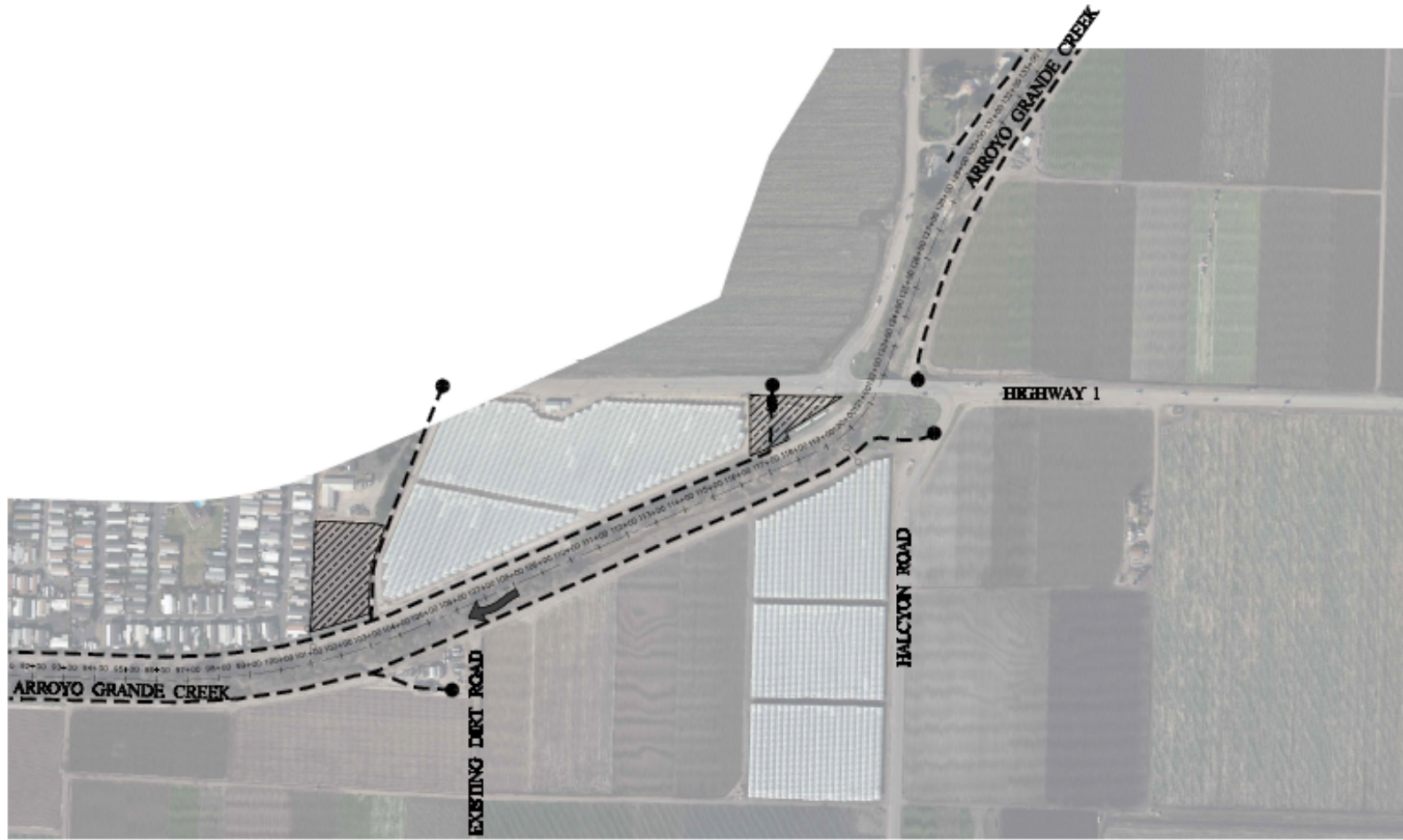
Project Overview – South Levee (Segments 1&2)



Project Overview – Staging and Access



Project Overview – Staging and Access



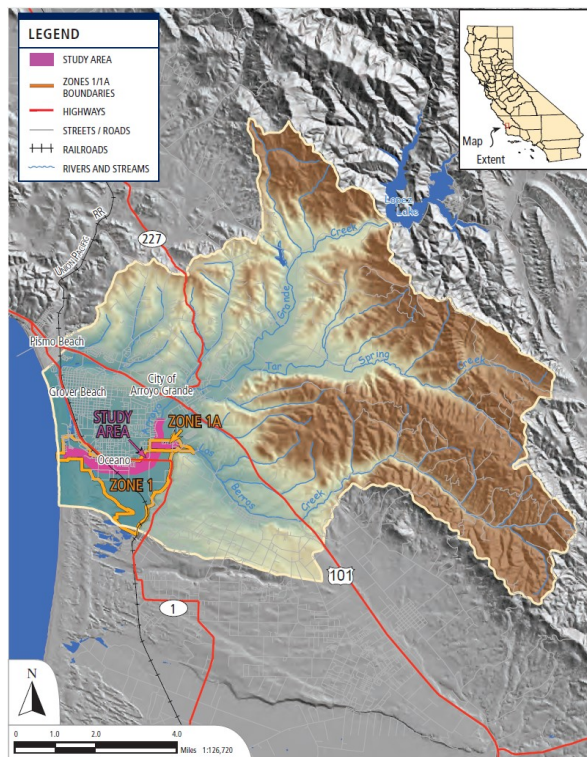
STAGING AND ACCESS SITE PLAN

SCALE 1"=200'



Project Overview – Special Considerations

- Forecast Considerations
 - El Niño forecast
 - Lopez Lake: 94.9% capacity



Arroyo Grande Creek Watershed

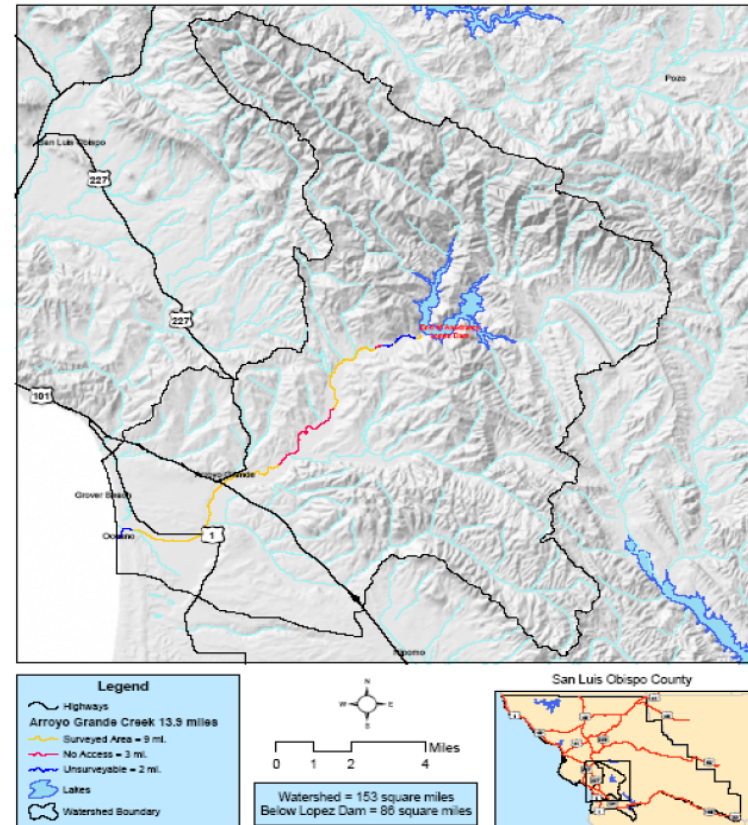


Figure 1

<https://wr.slocountywater.org/> -District's Rain and Stream-gage website



Project Overview – Special Considerations

- Environmental Considerations
 - Endangered Species located in project area
 - Steelhead, tidewater goby, California red-legged frog
 - Nesting bird season approaching March 1-August 31
- SWPPP requirements



Tentative Timeline

- Thursday, November 9, 2023 – Bids Began Advertising
- Tuesday, November 28, 2023 – Pre-Bid Conference
- Thursday, December 7, 2023 – Bid Opening in-person at the Katcho Achadjian Government Center at 3:15 PM San Luis Obispo, CA
- January 9, 2023 – Board of Supervisors to award contract
- February – Construction start

Note: Bid Opening date may be subject to change, will update on Public Purchase by EOD Thursday, November 30 for any changes



RFI's & Addenda

- RFI deadline is currently EOD, Thursday November 30, 2023 (5 business days prior to bid opening date)
- Any addenda will be posted on Public Purchase, any prospective bidders must check website for addenda or other relevant new information at up to 5:00PM the day before the prescribed date/time for submittal of bids.
- Questions: Please submit all questions through the RFI process on Public Purchase.



Thanks!



COUNTY OF SAN LUIS OBISPO

www.slocounty.ca.gov