



Los Osos Wastewater Project Phase 2 Lateral Connections and Septic System Reuse

SOUTH BAY COMMUNITY CENTER

JUNE 6, 2016

Mission Statement: *Public Works will be a valued community partner enhancing quality of life for our fellow county residents*



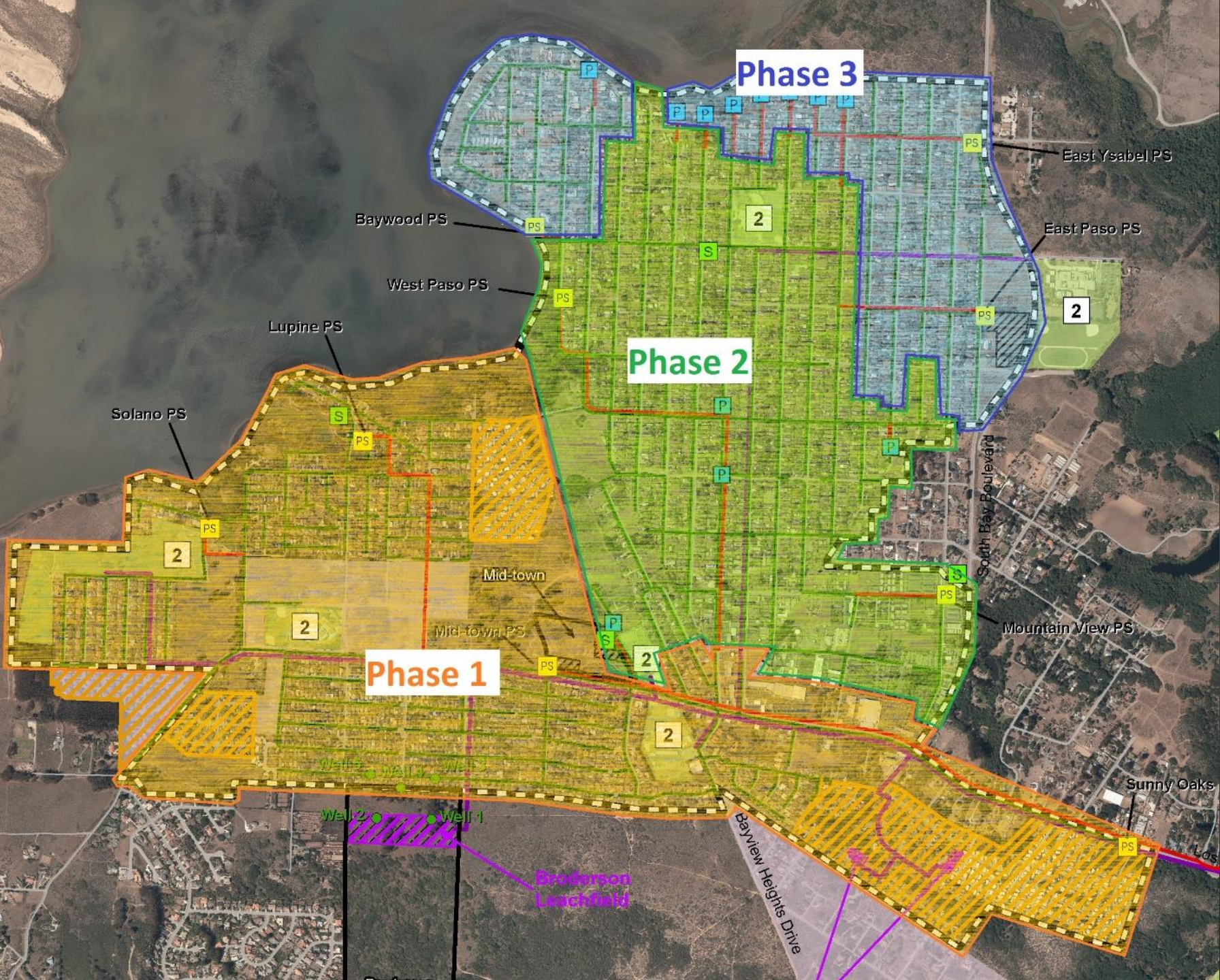
Lateral Connection Phase 2 Workshop

- ▶ Have your questions answered by County Staff and others
- ▶ Presentation
- ▶ Q&A at tables



PUBLIC WORKS DEPARTMENT
County of San Luis Obispo





Phase 3

Phase 2

Phase 1



PUBLIC WORKS DEPARTMENT
County of San Luis Obispo

Phase 1:
March - Sept

Phase 2:
June 20 – Dec 17

Phase 3:
Sept - March



Lateral Connection Details



PUBLIC WORKS DEPARTMENT
County of San Luis Obispo

- ▶ Obtain quotes and hire contractor
- ▶ Contractor obtains permits per Building Code



Lateral Connection Details



PUBLIC WORKS DEPARTMENT
County of San Luis Obispo

- ▶ Install new pipe from house to property line
- ▶ New pipe inspected before connection
- ▶ Connect to sewer



Lateral Connection Details



PUBLIC WORKS DEPARTMENT
County of San Luis Obispo

- ▶ Decommission septic system
- ▶ Pump out septic tank
 - ▶ Abandon in-place or
 - ▶ Convert for reuse



Septic System Abandonment



PUBLIC WORKS DEPARTMENT
County of San Luis Obispo

- ▶ Pump tank and fill with sand or slurry



Septic System Reuse

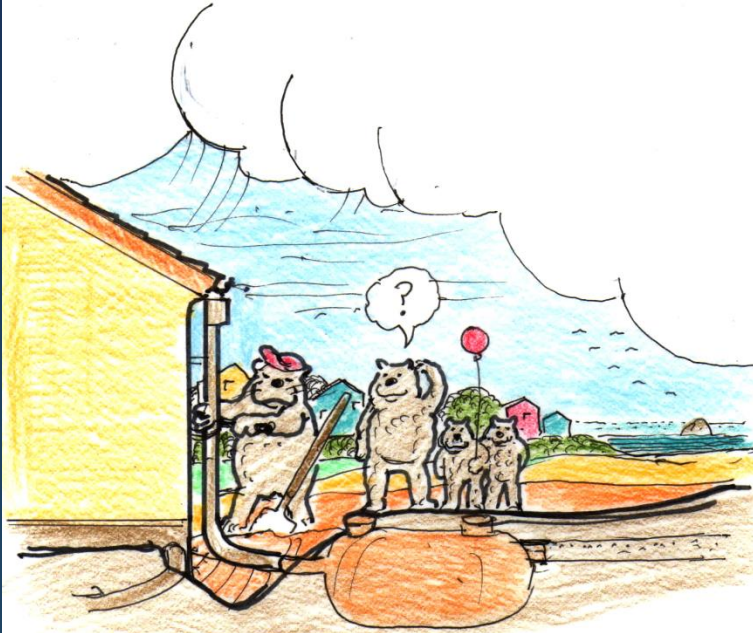
- ▶ Convert for reuse by sanitizing with bleach



PUBLIC WORKS DEPARTMENT
County of San Luis Obispo



Use That Tank!



Contents:

WHY? <i>A Brief History of Los Osos' Water</i>	1-2
WHAT? <i>Options For Reusing Your Septic System</i>	3
HOW? <i>Ways to Design & Implement Your System</i>	10
WHEN? <i>Timing & Sequence for the Reuse Process</i>	13
HOW MUCH? <i>Analyzing the Economics of Your Options</i>	15
WHO? <i>Information & Consultation Resources</i>	back cover

Beneficial Reuse of Your Septic Tank and Disposal Field

For the Community of Los Osos, California



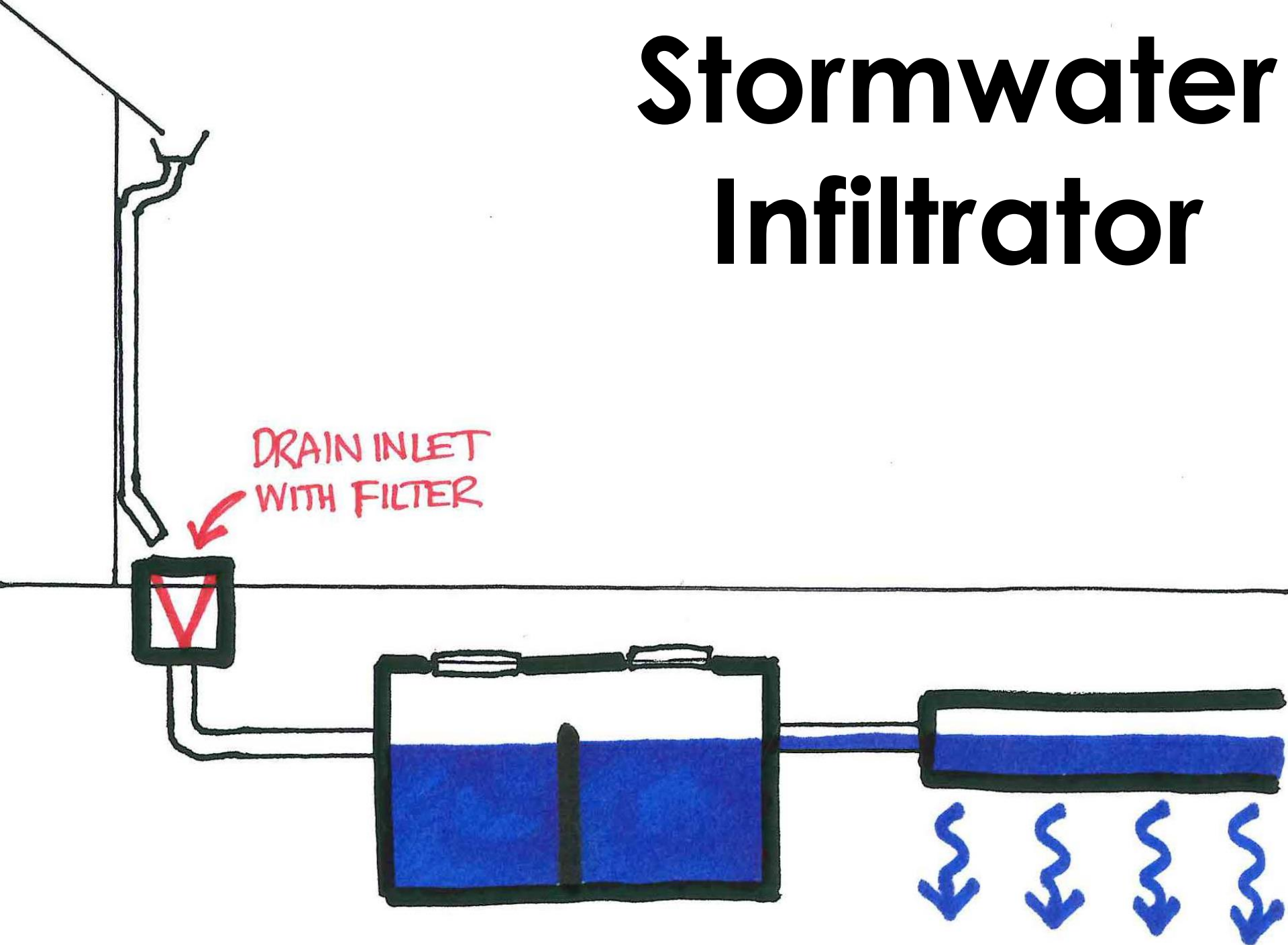
PUBLIC WORKS DEPARTMENT
County of San Luis Obispo



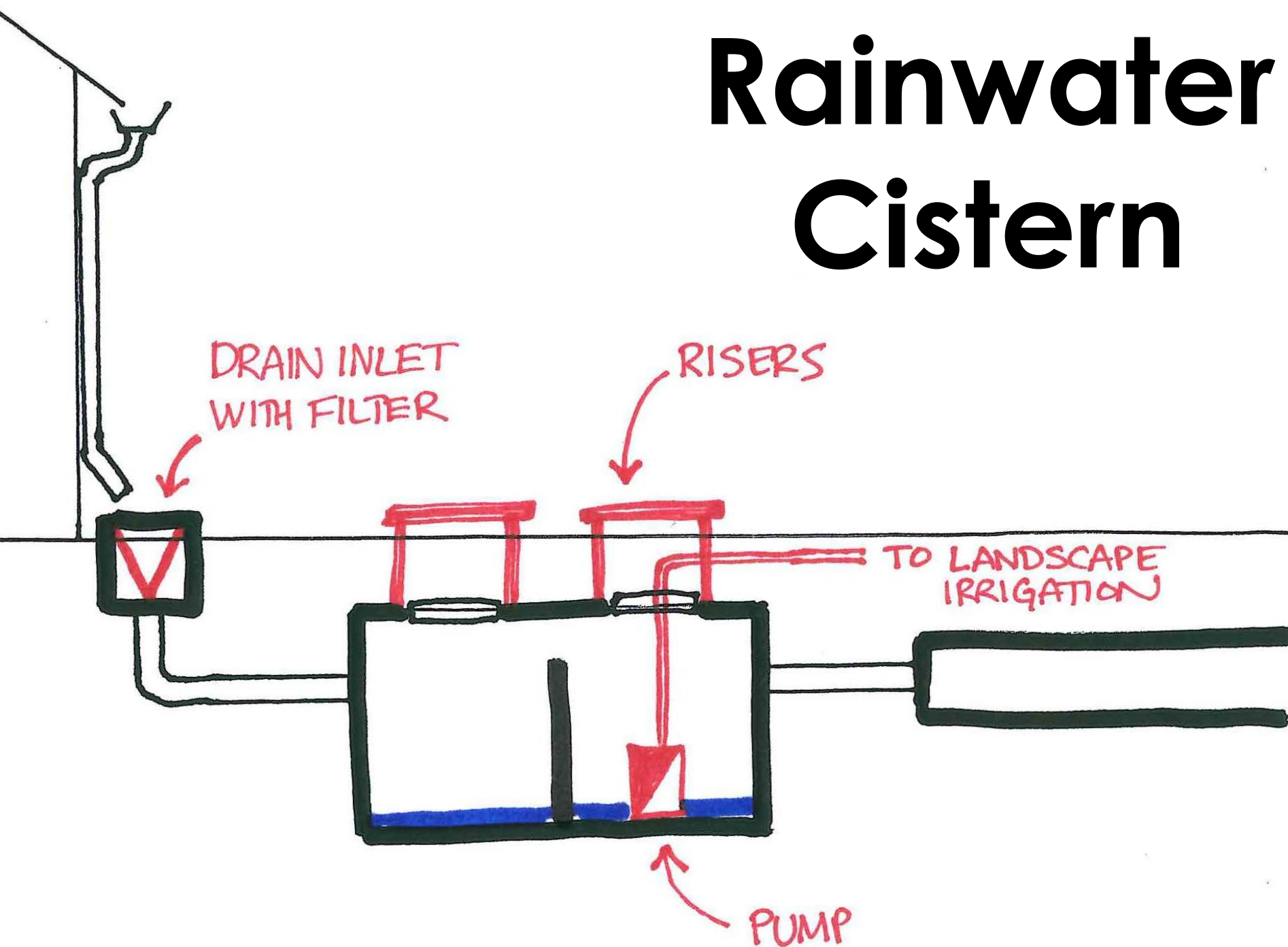
Stormwater Infiltrator



PUBLIC WORKS DEPARTMENT
County of San Luis Obispo



Rainwater Cistern



PUBLIC WORKS DEPARTMENT
County of San Luis Obispo





PUBLIC WORKS DEPARTMENT
County of San Luis Obispo

Drain inlet at the downspout





Inlet filter for water storage



PUBLIC WORKS DEPARTMENT
County of San Luis Obispo





Risers & lids for pump access



PUBLIC WORKS DEPARTMENT
County of San Luis Obispo

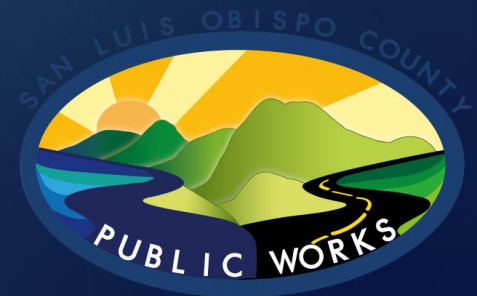




Submersible pump (portable)



PUBLIC WORKS DEPARTMENT
County of San Luis Obispo



Home > Outdoors > Garden Center > Watering & Irrigation > Rain Barrels

Model # PTHo933 | Internet # 205845768

55 Gal. Blue Industrial Plastic Drum

★★★★★ (5) [Write a Review +](#) | [Questions & Answers \(14\) +](#)



\$69.99 /each

- Includes a sealed tight-head drum with 2 bungs
- Uses include rainwater collection, composting, hydropon
- BPA free, HDPE resin



Ship to Home

Estimated Arrival: MAR 29 - MAR 31

[See Shipping Options +](#)



Ship to Store FREE

Available for Pick Up: MAR 30 - APR 4

1

ADD TO CART

OR

Buy now with **PayPal**

[+]

Feedback

Item cannot be shipped to the following state(s)



PUBLIC WORKS DEPARTMENT
County of San Luis Obispo

20 rain barrels



slogreenbuild.org



PUBLIC WORKS DEPARTMENT
County of San Luis Obispo

SLO Green Build

CENTRAL COAST GREEN BUILDING COUNCIL CHAPTER

Appropriate Technology Guides

Application of appropriate technologies as described in these guides can improve our connection to water and maintenance of a healthy hydrologic cycle throughout San Luis Obispo and Santa Barbara Counties. **Printed copies of the guides are available for purchase (shipping included). Digital copies are available for free (but donations are welcome).**

<p>San Luis Obispo - Coalition of Appropriate Technology's Guide to</p> <h3>Harvesting the Rain</h3> <p>Harvesting the Rain - Storage and Use (PRINT) \$13.00</p>	<p>San Luis Obispo County Homeowner's Guide to</p> <h3>Rainwater Management</h3> <p>Rain Management for Low Impact Developm... \$13.00</p>	<p>SAN LUIS OBISPO GUIDE TO THE USE OF GRAYWATER</p> <p>Guide to the Use of Greywater (SOLD OUT) \$10</p>
---	--	---

- ▶ Rainwater use for toilet flushing
- ▶ Treated graywater
- ▶ Other combinations



Project Cost Estimates



PUBLIC WORKS DEPARTMENT
County of San Luis Obispo

Cost Category	Amount
Assessment Charges (\$24,949 per home)	\$1,100/year
Service Charges – flat fee	\$450/year
Service Charges – usage fee (1¢ per gallon)	\$450/year
Total Charges	\$2,000/year
Lateral Connections	Typically ± \$3,000



Financial Assistance



PUBLIC WORKS DEPARTMENT
County of San Luis Obispo

- ▶ USDA 504 Program (Loan/Grant)
- ▶ Lateral Connection Funding (Grant)
- ▶ Service Charges Assistance Program (20% Discount)
- ▶ Property Tax Postponement Program (Loan)
- ▶ PACE Program (Loan)



Water Conservation Program

Required Retrofits



PUBLIC WORKS DEPARTMENT
County of San Luis Obispo

Fixture Unit	Maximum Flow	Rebate Amounts
Toilets	1.6 gpf	\$250
Showerheads	2.0 gpf	\$40
Faucet Aerators – Residential	1.5 gpm	\$5
Faucet Aerators – Commercial	0.5 gpm	\$5
Urinals - Commercial	0.5 gpf	\$500



Water Conservation Program

Optional Retrofits



PUBLIC WORKS DEPARTMENT
County of San Luis Obispo

Fixture Unit	Eligible Items	Rebate Amounts
1.6 gpf toilets	1.0 gpf	\$250
Clothes Washers – residential or commercial	Tier 3 Water Factor 4	\$150 plus up to \$50 PG&E and \$75 Gas Co.
Extra Alternative Measures	Needs prior approval	\$300
Lawn turf removal Saveourwater.com	Existing lawns	\$2/square foot



Questions and Assistance

- ▶ Your contractor
- ▶ Weekly office hours
- ▶ Financial assistance options
- ▶ Water Conservation Rebates
- ▶ Website, call, or email County staff



PUBLIC WORKS DEPARTMENT
County of San Luis Obispo





PUBLIC WORKS DEPARTMENT
County of San Luis Obispo

Questions?

