

Templeton Drainage and Flood Control Study



San Luis Obispo County Flood Control and
Water Conservation District

Participants

- San Luis Obispo County Flood Control and Water Conservation District – Lead Agency
- North Coast Engineering – Consulting Engineer
- Templeton CSD
- Templeton Area Advisory Group

Purpose and Need

■ Purpose –

- To develop a community drainage plan that identifies current areas of concern and guides future planning efforts
- To enhance the overall community health and safety

■ Need –

- There are existing flooding areas
- Templeton has high potential for additional development to occur

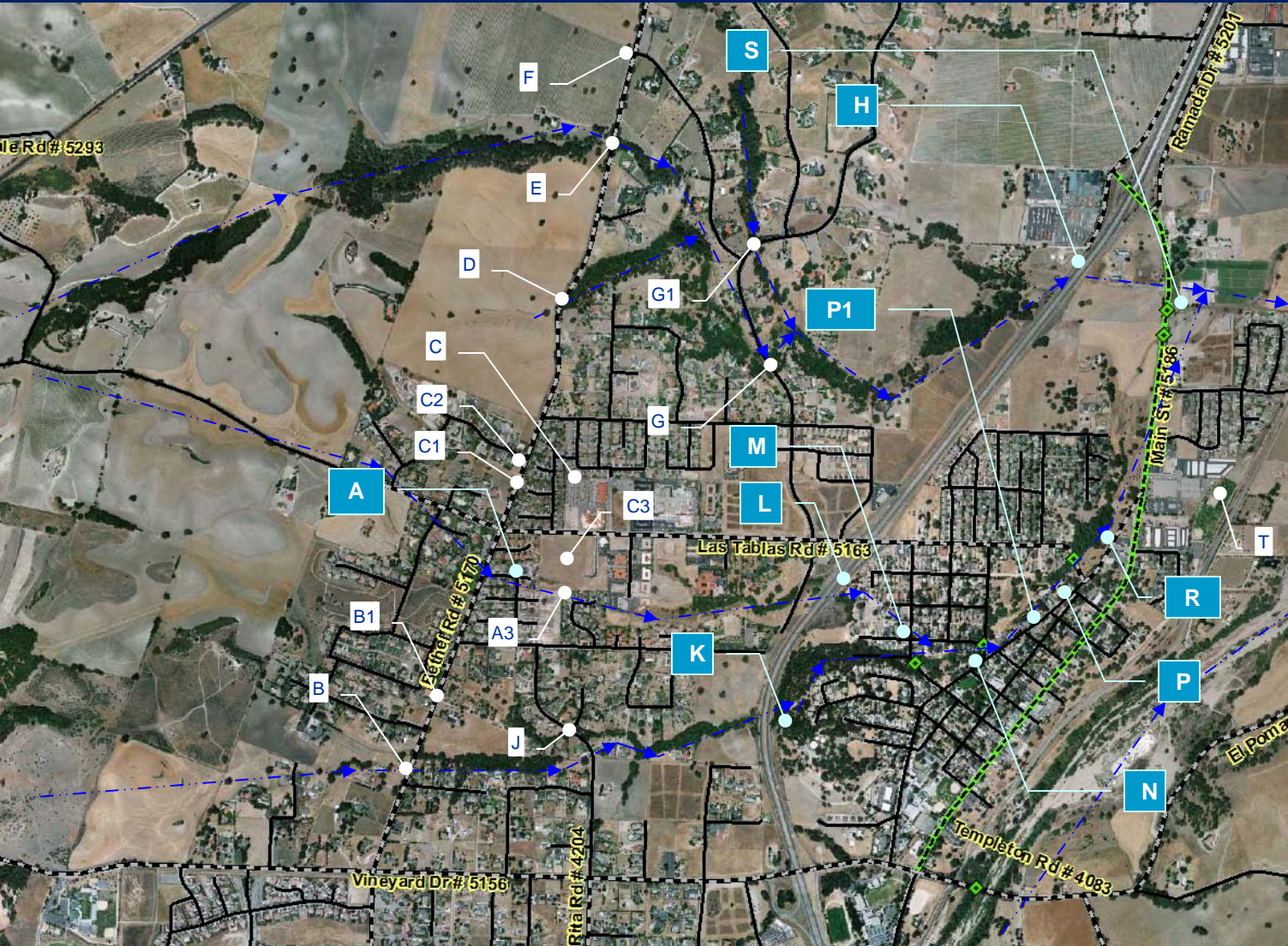
Goal of Presentation

- Discuss community wide drainage issues based on the data collected and hydraulic model analysis of the Templeton watershed
- And receive community input

Background

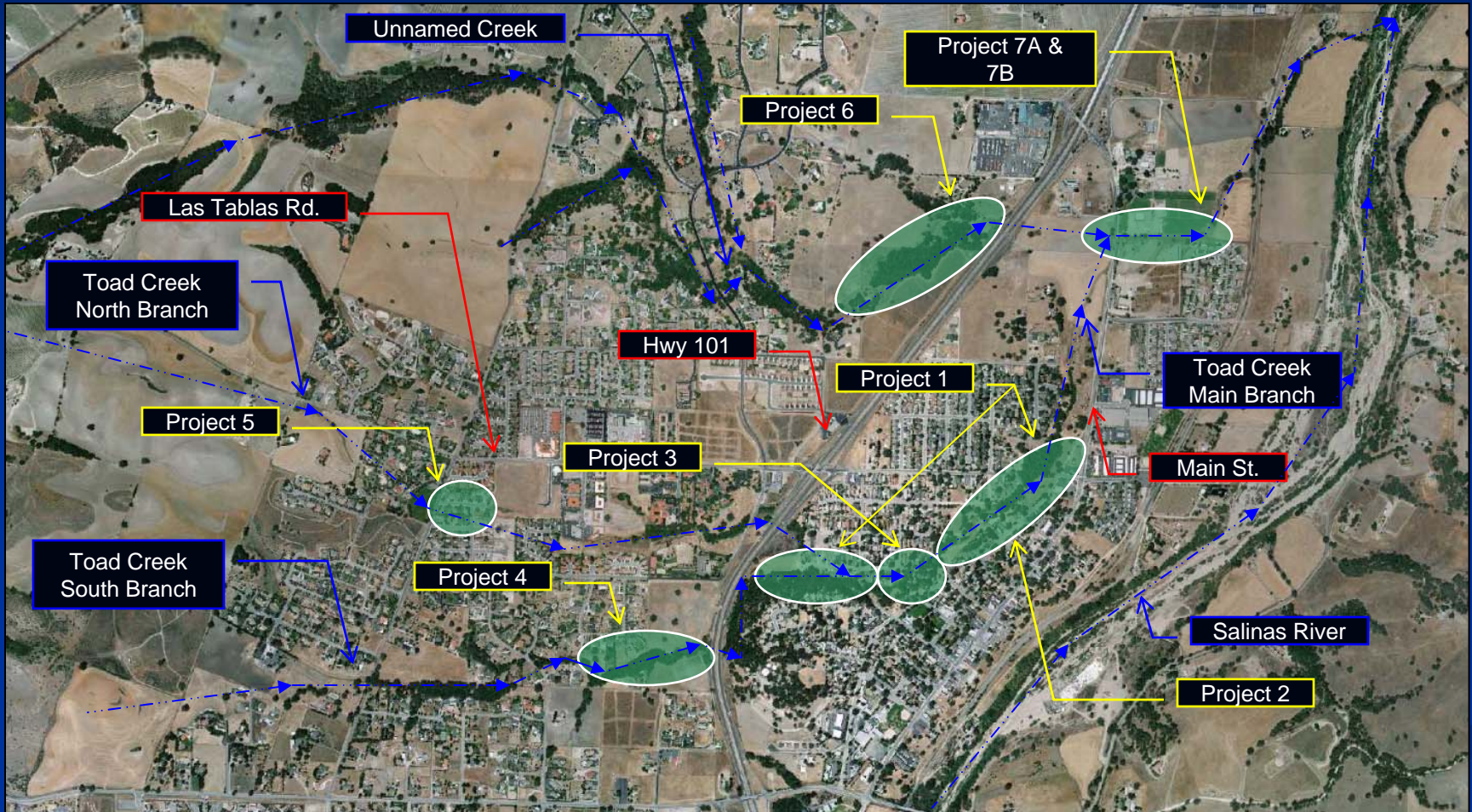
- The Six Community Drainage Studies completed in 2004
 - Cambria, Cayucos, Los Osos, Nipomo, Oceano, San Miguel , Santa Margarita
 - These reports are available at slocountywater.org
- Initiated first phase of the Templeton study in 2008
- Preliminary report identified areas of interest
- Current report focuses on areas of highest impact

Areas of Interest



A	Regional detention basin
H	(4) 60" pipe culvert @ Hwy 101
K	5' x 5' box culvert @ Hwy 101
L	5' x 5' box culvert @ Hwy 101
M	Arizona Crossing of Salinas Ave with (2) 24" CMP culverts
N	Florence St. Bridge
P	Eddy St. Bridge
P1	(2) 36" pipe culvert @ Salinas Avenue
R	Las Tablas Road Bridge, Channel
S	Main St. Box culverts, (2) 4.5' x 10' and (3) 3.5' x 8'

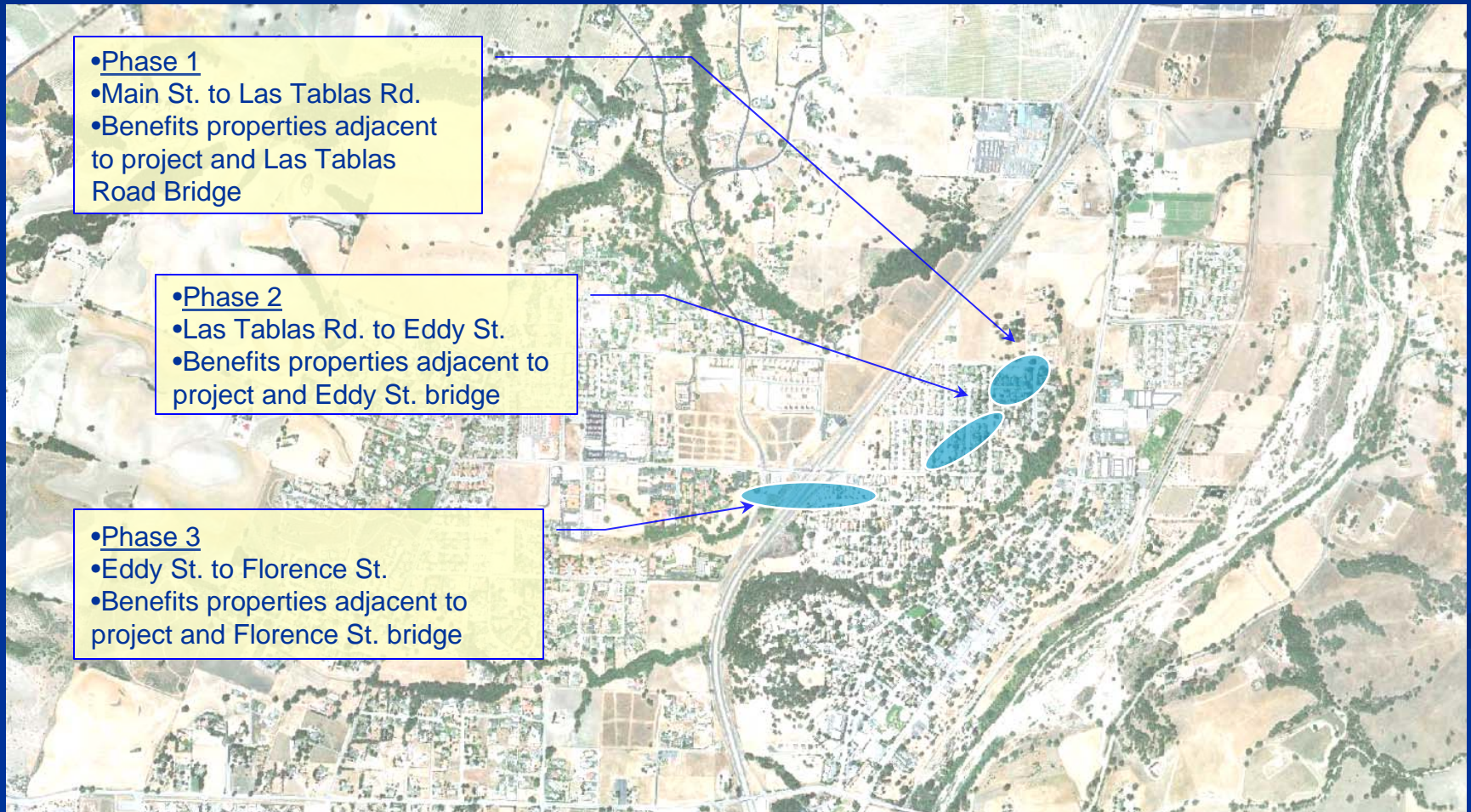
Overall Study Area



Project 1 -Vegetation Maintenance

Project 2 – Sediment Removal

Increase Channel Capacity, Reduce Water Surface Elevation



Project 1, Phase 1 -Vegetation Maintenance

Project 2, Phase 1 – Sediment Removal

From Main St. to Las Tablas Rd.



Project 1, Phase 2 -Vegetation Maintenance

Project 2, Phase 2 – Sediment Removal

From Las Tablas Rd. to Eddy St.



Project 1, Phase 3 -Vegetation Maintenance

From Eddy St. to Florence St.



Project 1, Phase 1 to 3 -Vegetation Maintenance

Project 2, Phase 1 to 2– Sediment Removal

■ Benefits

- Increased channel capacity
- Reduced water surface elevation level

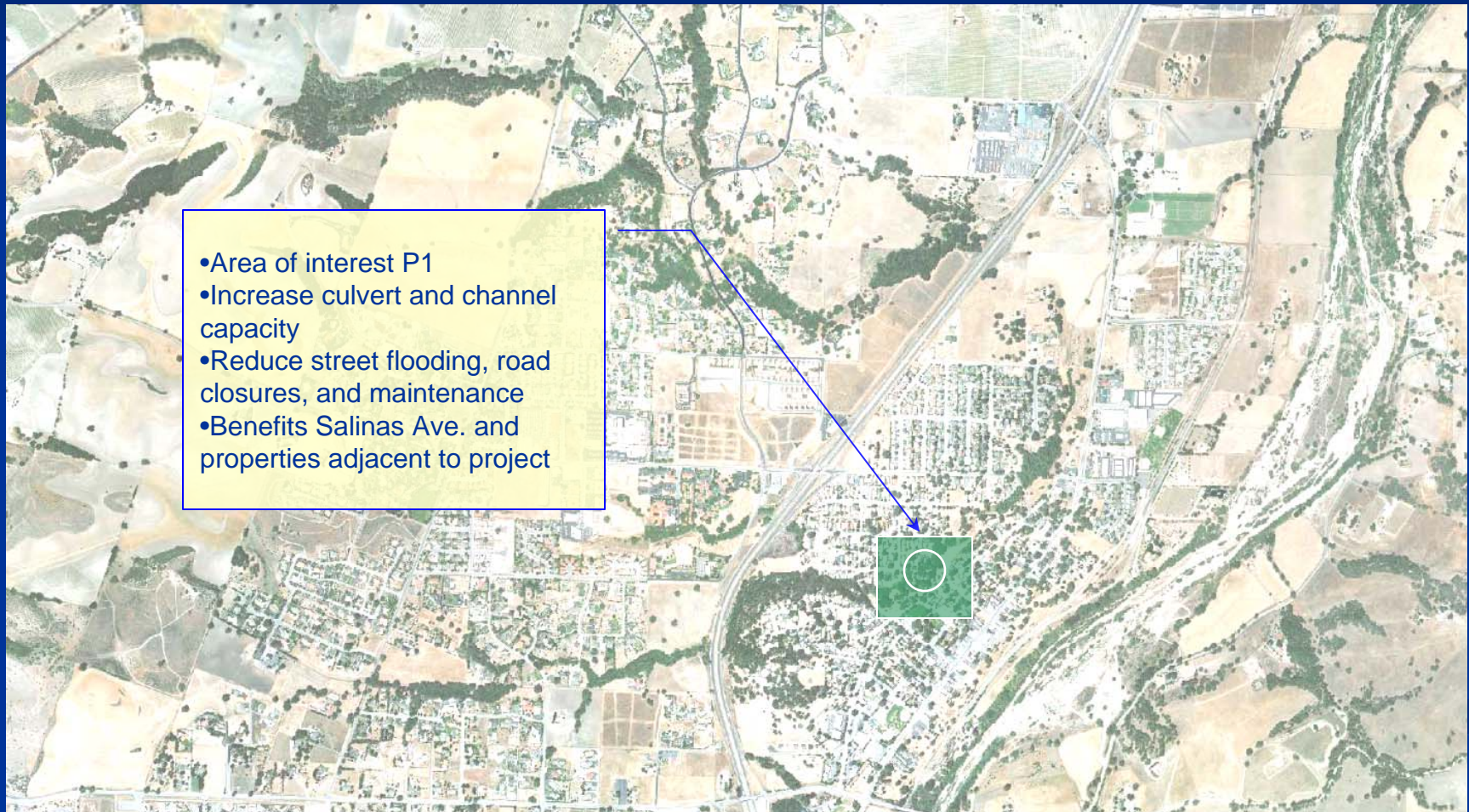
■ Area of Benefit

- Phase 1 - Properties adjacent to Toad Creek channel – Las Tablas Rd to Main St and Las Tablas Bridge
- Phase 2 - Properties adjacent to Toad Creek Channel – Eddy St to Las Tablas Road and Eddy St. Bridge
- Phase 3 - Properties adjacent Toad Creek – Florence St and Florence St. Bridge

Project 3

Increase Culvert and Channel Cap.

At Salinas Ave. and Eddy St.



Project 3

Increase Culvert and Channel Cap.

At Salinas Ave. and Eddy St.



Project 3

Increase Culvert and Channel Cap.

At Salinas Ave. and Eddy St.



Project 3

Increase Culvert and Channel Cap.

At Salinas Ave. and Eddy St.

- Benefits

- Reduce street flooding, road closures, and maintenance

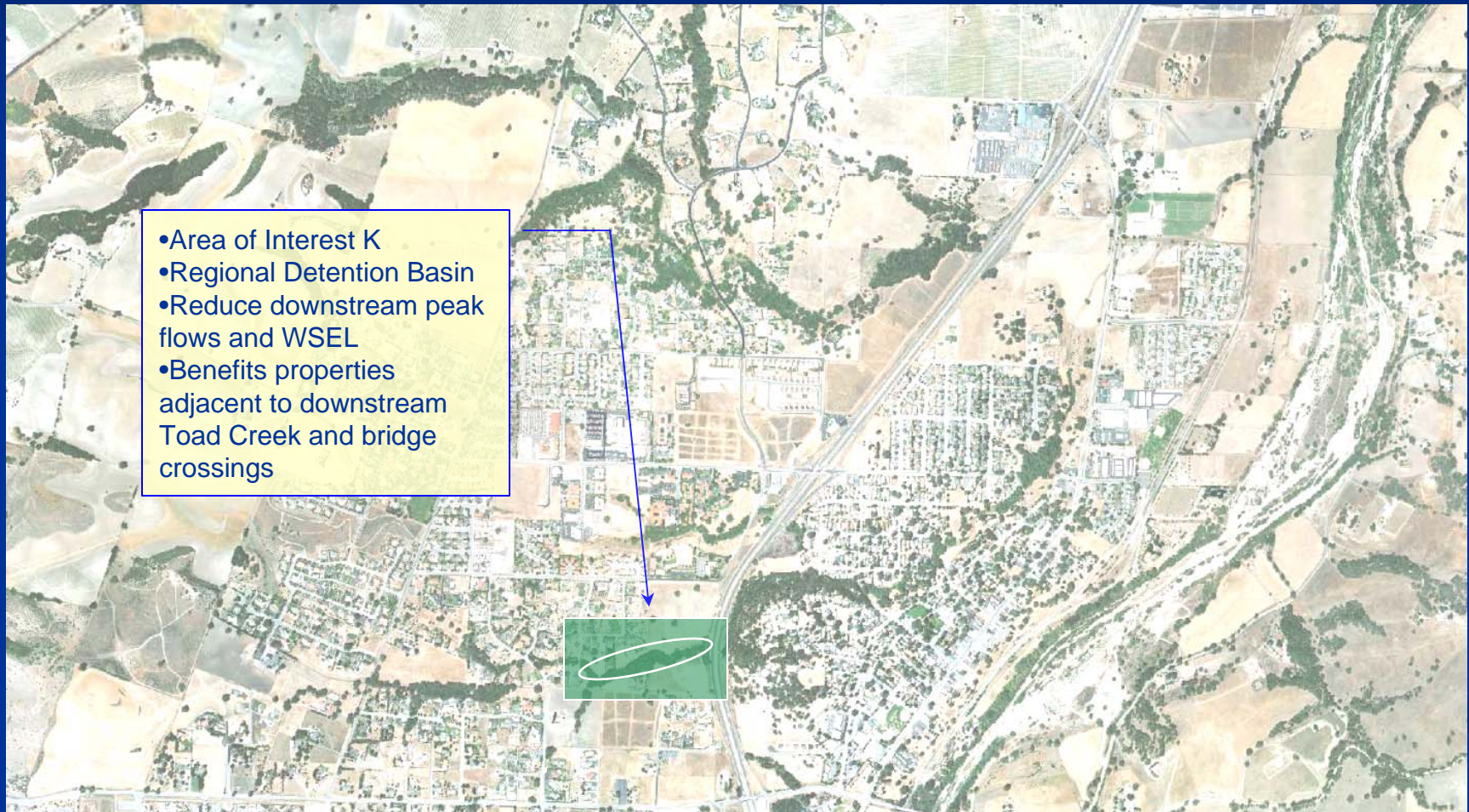
- Area of Benefit

- Salinas Ave. and properties adjacent to project

Project 4

Regional Detention Basin

From Delores Lane to Jordan Lane



Project 4

Regional Detention Basin

From Delores Lane to Jordan Lane



Project 4

Regional Detention Basin

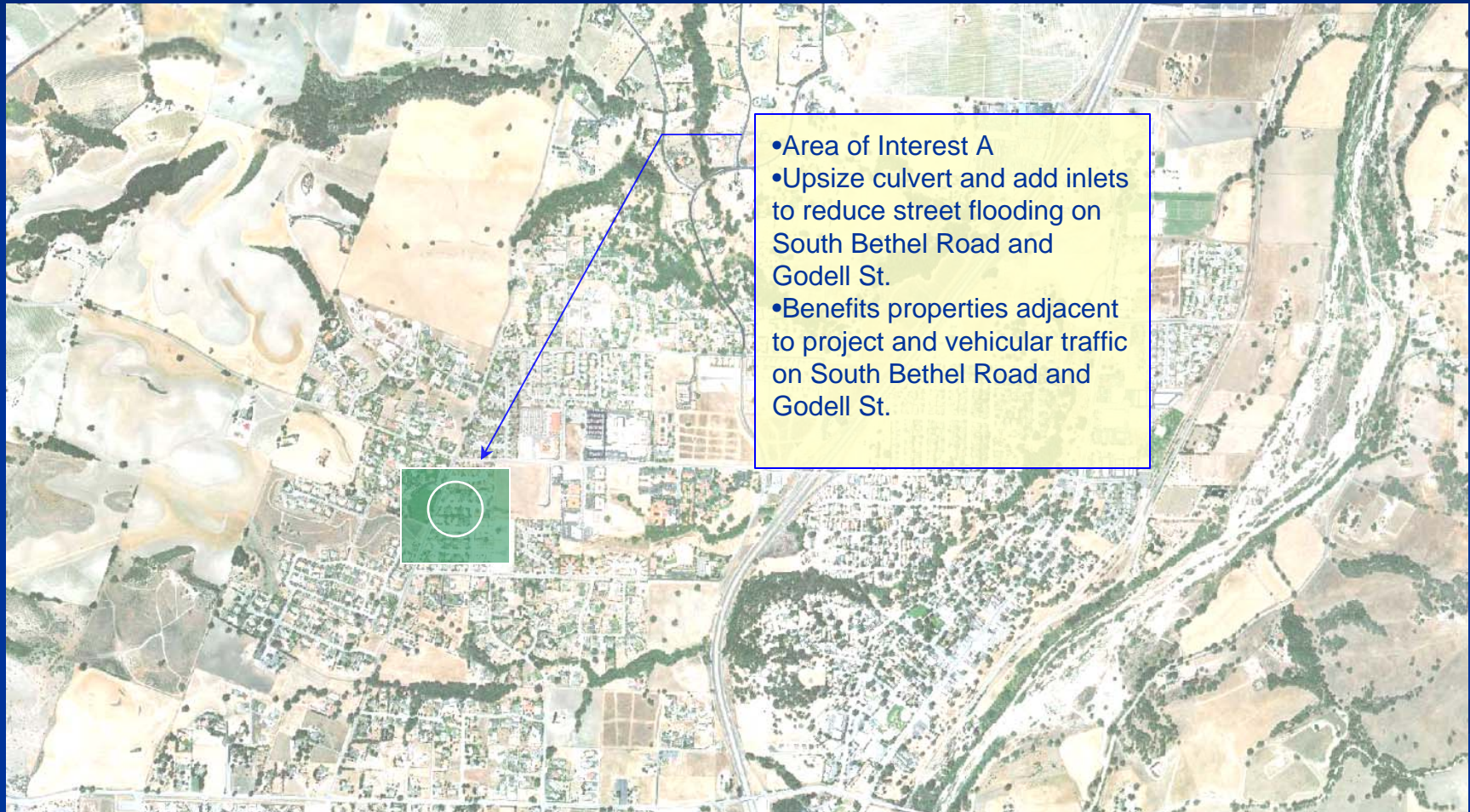
From Delores Lane to Jordan Lane

- Benefits
 - Reduce downstream peak flows and WSEL
- Area of Benefit
 - Properties Adjacent to downstream Toad Creek and bridge crossings

Project 5

Upsize Culvert and Add Inlets

At S. Bethel Rd. and Godell St.



- Area of Interest A
- Upsize culvert and add inlets to reduce street flooding on South Bethel Road and Godell St.
- Benefits properties adjacent to project and vehicular traffic on South Bethel Road and Godell St.

Project 5

Upsize Culvert and Add Inlets

At S. Bethel Rd. and Godell St.



Project 5

Upsize Culvert and Add Inlets

At S. Bethel Rd. and Godell St.

■ Benefits

- Reduce street flooding on South Bethel Road and Godell St.

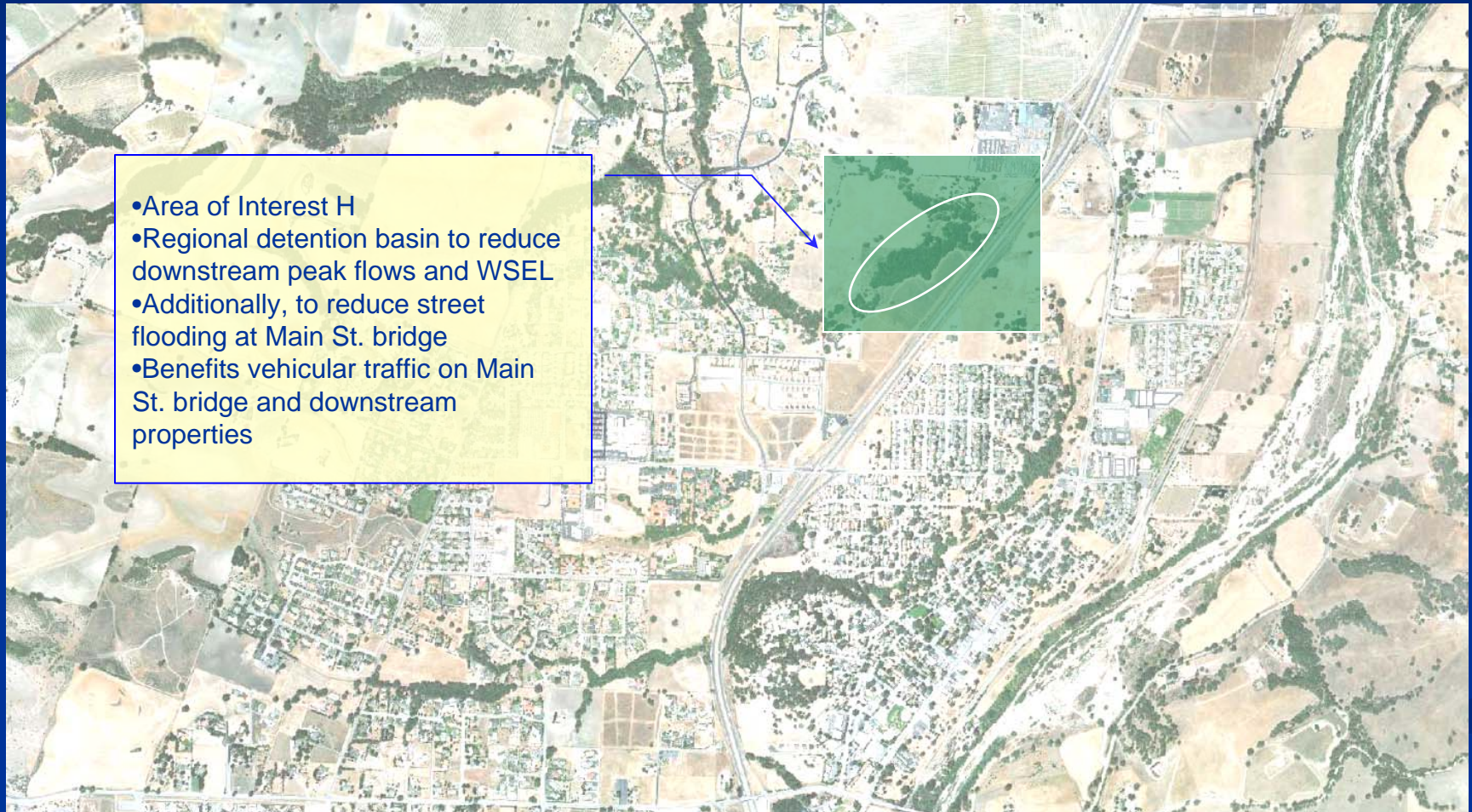
■ Area of Benefit

- Properties adjacent to project and vehicular traffic on South Bethel Road and Godell St.

Project 6

Regional Detention Basin

West of Hwy 101 and South of Theater Drive



- Area of Interest H
- Regional detention basin to reduce downstream peak flows and WSEL
- Additionally, to reduce street flooding at Main St. bridge
- Benefits vehicular traffic on Main St. bridge and downstream properties

Project 6

Regional Detention Basin

West of Hwy 101 and South of Theater Drive



Project 6

Regional Detention Basin

West of Hwy 101 and South of Theater Drive

■ Benefits

- Reduce downstream peak flows and WSEL
- Reduce street flooding at Main St. bridge

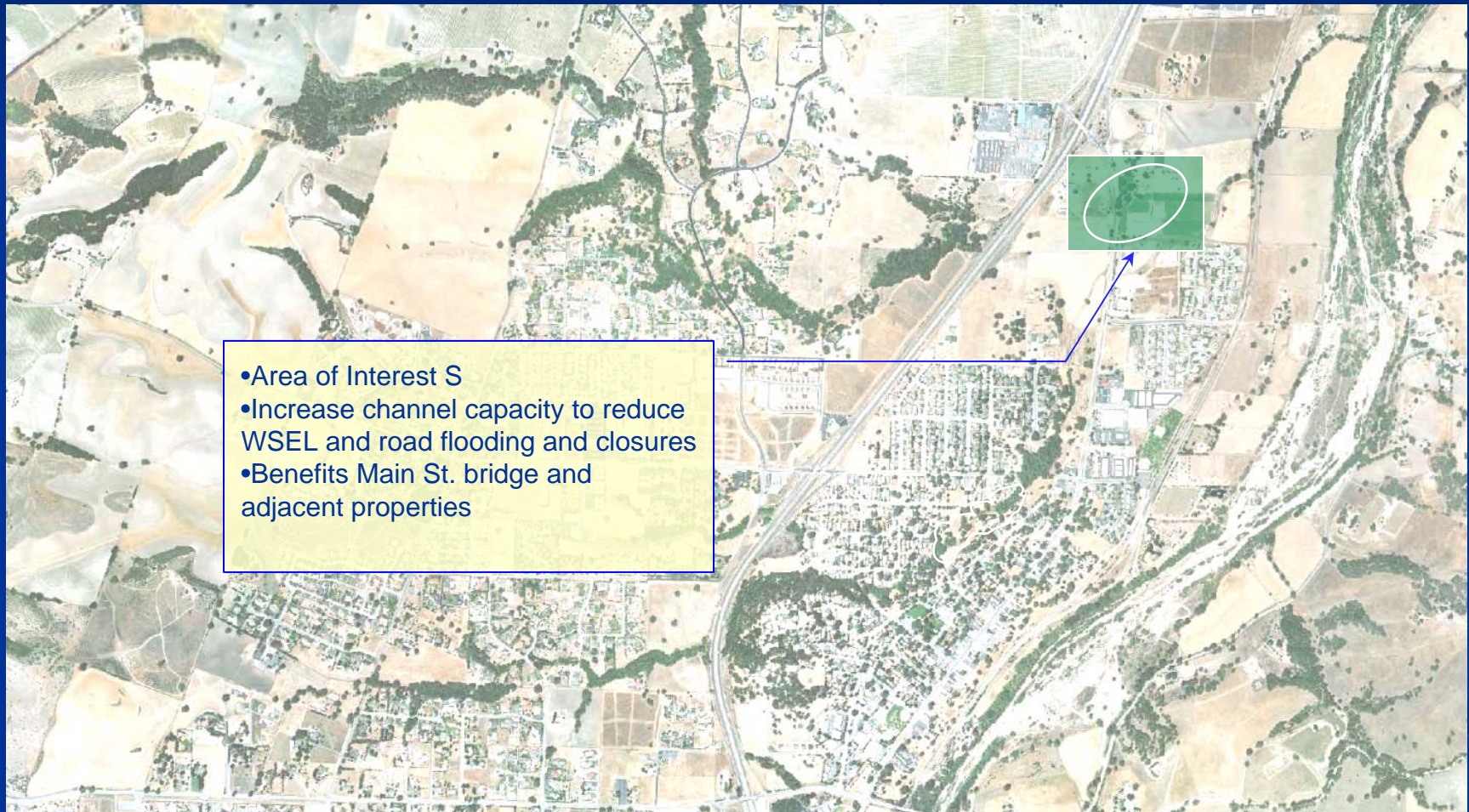
■ Area of Benefit

- Vehicular traffic on Main St. bridge and downstream properties

Project 7A

Increase Channel Capacity

North Main St.



Project 7A

Increase Channel Capacity

North Main St.



Project 7A

Increase Channel Capacity

North Main St.



Looking east



East side of Main St looking south
from culvert

Project 7A

Increase Channel Capacity

North Main St.



“Bend” looking north easterly



East side of Main St looking north
from culvert

Project 7A

Increase Channel Capacity

In Area of Interest S: North Main St.

- Benefits

- Decrease WSEL

- Reduce road flooding and closures

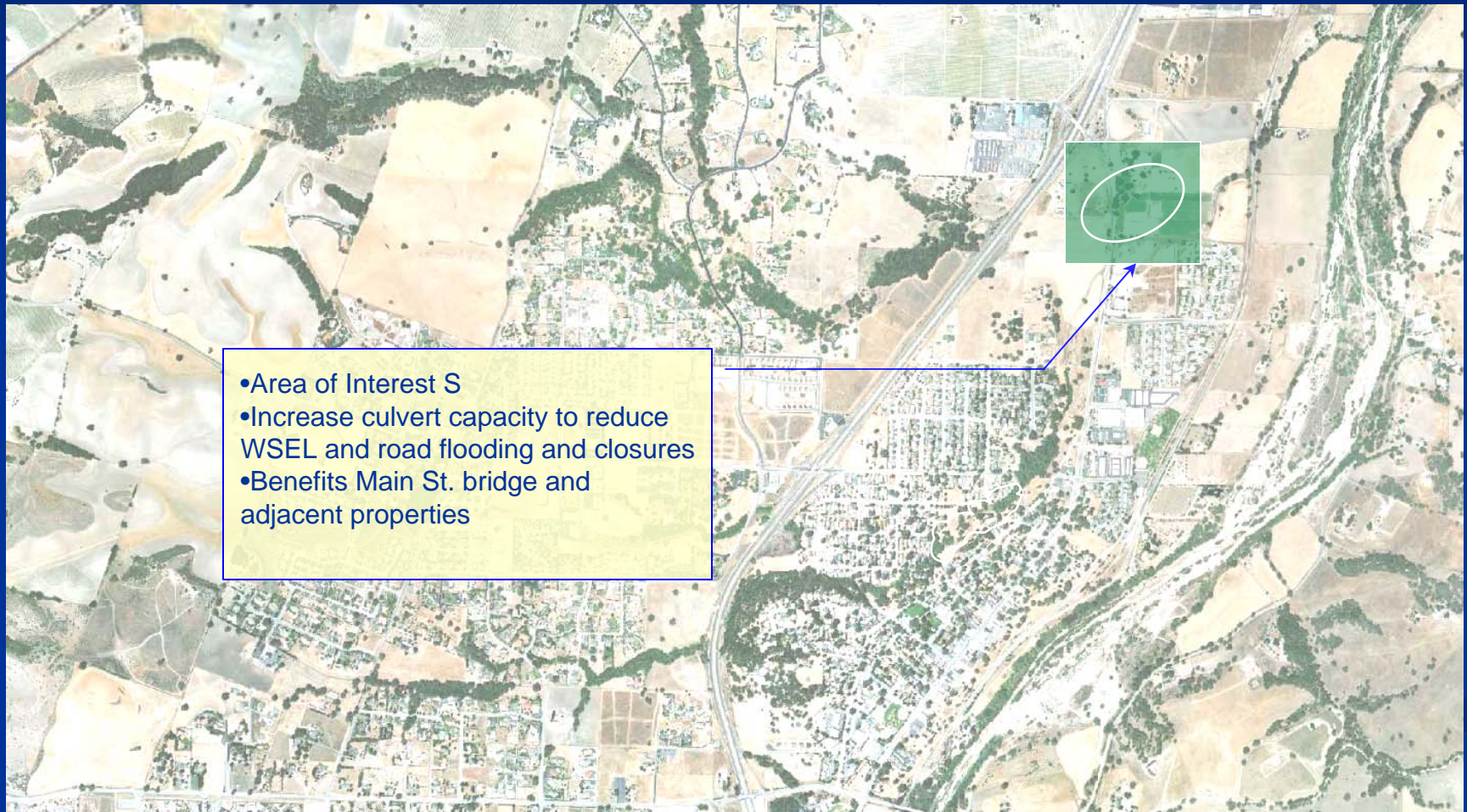
- Area of Benefit

- Main St. bridge and adjacent properties

Project 7B

Increase Culvert Capacity

In Area of Interest S: North Main St.

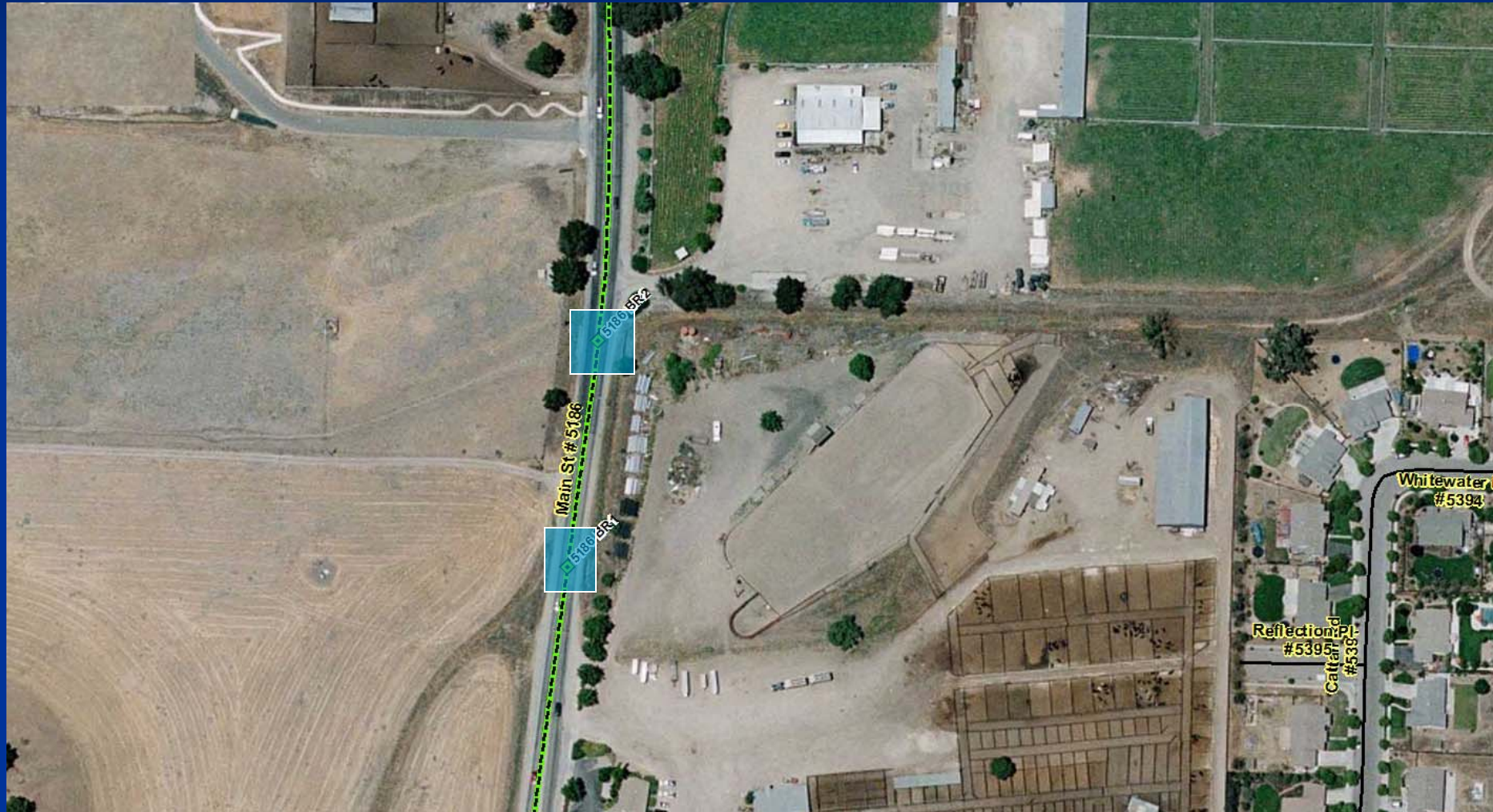


- Area of Interest S
- Increase culvert capacity to reduce WSEL and road flooding and closures
- Benefits Main St. bridge and adjacent properties

Project 7B

Increase Culvert Capacity

In Area of Interest S: North Main St.



Project 7B

Increase Culvert Capacity

In Area of Interest S: North Main St.



North culverts looking east



South culverts

Project 7B

Increase Culvert Capacity

North Main St.

- Benefits
 - Decrease WSEL
 - Reduce road flooding and closures
- Area of Benefit
 - Main St. bridge and adjacent properties

Projects Summary

Project	Project Location	Benefit	Preliminary Construction Cost Only
1 Phase 1	Channel from Main St. to Las Tablas Rd	Increase channel capacity, reduced WSEL	\$28,000
1 Phase 2	Channel from Las Tablas Rd. to Eddy St.	Increase channel capacity, reduced WSEL	\$28,000
1 Phase 3	Channel from Eddy St. to Florence St.	Increase channel capacity, reduced WSEL	\$42,000
2 Phase 1	Channel from Main St. to Las Tablas Rd.	Increase channel capacity, reduced WSEL, reduce road closures and maintenance	\$78,400
2 Phase 2	Las Tablas Rd. to Eddy St.	Increase channel capacity, reduced WSEL, reduce road closures and maintenance	\$126,000
3	Intersection of Salinas Ave. and Eddy St.	Reduce street flooding, and closures, and maintenance	\$337,400

***SLO County would be the lead agency and would also take over maintenance of the system after construction.**

Projects Summary, cont.

Project	Project Location	Benefit	Preliminary Construction Cost Only
4	Dolores Lane to Jordan Lane	Reduce downstream peak flows and WSEL	\$280,000
5	South Bethel Rd. and Godell St.	Reduce street flooding on South Bethel Road and Godell St.	\$254,800
6	West of Hwy 101 and South of Theater Dr.	Reduce downstream peak flows and WSEL, reduce street flooding at Main St. bridge	\$420,000
7A	North Main St.	Decrease WSEL and reduce road flooding and closures	\$217,000
7B	North Main St.	Decrease WSEL and reduce road flooding and closures	\$202,300

***SLO County would be the lead agency and would also take over maintenance of the system after construction.**

Questions?