



COUNTY OF SAN LUIS OBISPO
ADMINISTRATIVE OFFICE – OFFICE OF EMERGENCY SERVICES

Wade Horton *County Administrative Officer*

Scott Jalbert *Emergency Services Manager*

Date: January 11, 2023

Contact: County OES (805) 781-4300

COMMUNITY MEETING – ARROYO GRANDE LEVEE/OCEANO LAGOON AREA EVACUATION WARNING

If you live in the vicinity covered by the evacuation warning around the Arroyo Grande Creek Levee in Oceano, you are encouraged to attend a community meeting tomorrow, **January 12, 2023 at 6:30 p.m. at the Oceano Community Services District (OSCD) Board Room** (1655 Front St., Oceano, CA). The meeting will also be streamed on Facebook Live.

We want to provide critical information and updates about the current evacuation warning and potential future evacuation orders. The meeting is being hosted by Supervisors Jimmy Paulding and Dawn Ortiz-Legg. Representatives from CAL FIRE, Five Cities Fire Authority, the San Luis Obispo County Office of Emergency Services, County Public Works, and the Sheriff's Office will be present to communicate information and answer questions.

REUNIÓN COMUNITARIA – ADVERTENCIA DE EVACUACIÓN DEL ÁREA DE OCEANO LAGOON EXTENDIDA

Está invitado a una reunión comunitaria el **12 de enero de 2023 a las 6:30 p. m. en la sala de juntas del Distrito de Servicios Comunitarios de Oceano (OSCD)** ubicada en 1655 Front St., Oceano, CA (donde se paga el agua) para recibir información y actualizaciones sobre la advertencia de evacuación de los lugares cerca el Arroyo Grande Creek Levee(el arroyo) /Laguna de Océano organizada por el supervisor Jimmy Paulding y la supervisora Dawn Ortiz-Legg. Representantes de CalFire, la Oficina de Servicios de Emergencia y la Oficina del Sheriff estarán presentes para comunicar información y responder preguntas

Contact: County OES 805-781-4300
District 4 Office 805-781-4337
District 3 Office 805-781-4336

County of San Luis Obispo Government Center

1055 Monterey Street | San Luis Obispo, CA 93408 | (P) 805-781-4300 | (F) 805-781-5005

See Attached Press Release for Additional Information

Date: January 11, 2023

Contact: County OES (805) 781-4300

OCEANO LAGOON AREA EVACUATION WARNING EXTENDED

San Luis Obispo, CA – San Luis Obispo County has extended the Evacuation Warning for the area around the Arroyo Grande Levee / Oceano Lagoon to include:

- South of Pier Ave. to the ocean
- North and East of Strand Way & River Ave.
- East to the railroad tracks, along the tracks, back up to Pier Ave.

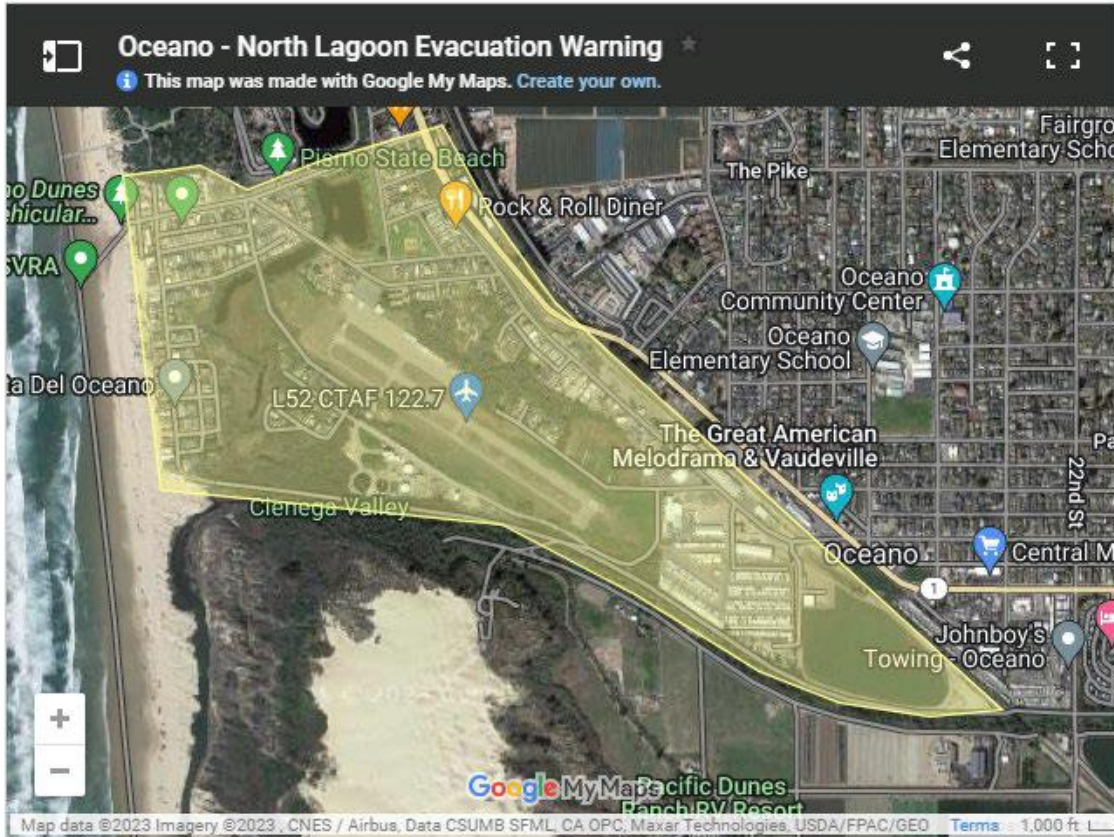
Residents in these areas should be prepared for possible flooding and evacuation as additional storms hit the County. Ongoing storms will continue to fill the lagoon and levee and potentially overflow into surrounding residential neighborhoods. Residents should have a plan in place on where to go if evacuation is ordered. Please plan for your pets and any medication or items you need to take with you.

Residents are reminded that if evacuations become necessary, emergency officials will use notification methods as appropriate such as Wireless Emergency Alerts, reverse telephone notification system and local and social media.

Detailed maps of the area under Evacuation Warning are available on [ReadySLO.org](https://www.ready.slo.org).

For more storm preparation information and locations to obtain sand and sandbags, visit [ReadySLO.org](https://www.ready.slo.org). Follow the County of San Luis Obispo Office of Emergency Services on [Twitter @slocountyoes](https://twitter.com/slocountyoes) and [Facebook.com/SLOCountyOES](https://www.facebook.com/SLOCountyOES).

Evacuation Warning Area:



###

For more storm and recovery information, visit [ReadySLO.org](https://www.ready.slo.org). Follow the County of San Luis Obispo Office of Emergency Services on [Twitter @slocountyoes](https://twitter.com/slocountyoes) and [Facebook.com/SLOCountyOES](https://www.facebook.com/SLOCountyOES). ###

County of San Luis Obispo Government Center

1055 Monterey Street | San Luis Obispo, CA 93408 | (P) 805-781-5000 | (F) XXX-XXX-XXXX
info@slocounty.ca.gov | slocounty.ca.gov